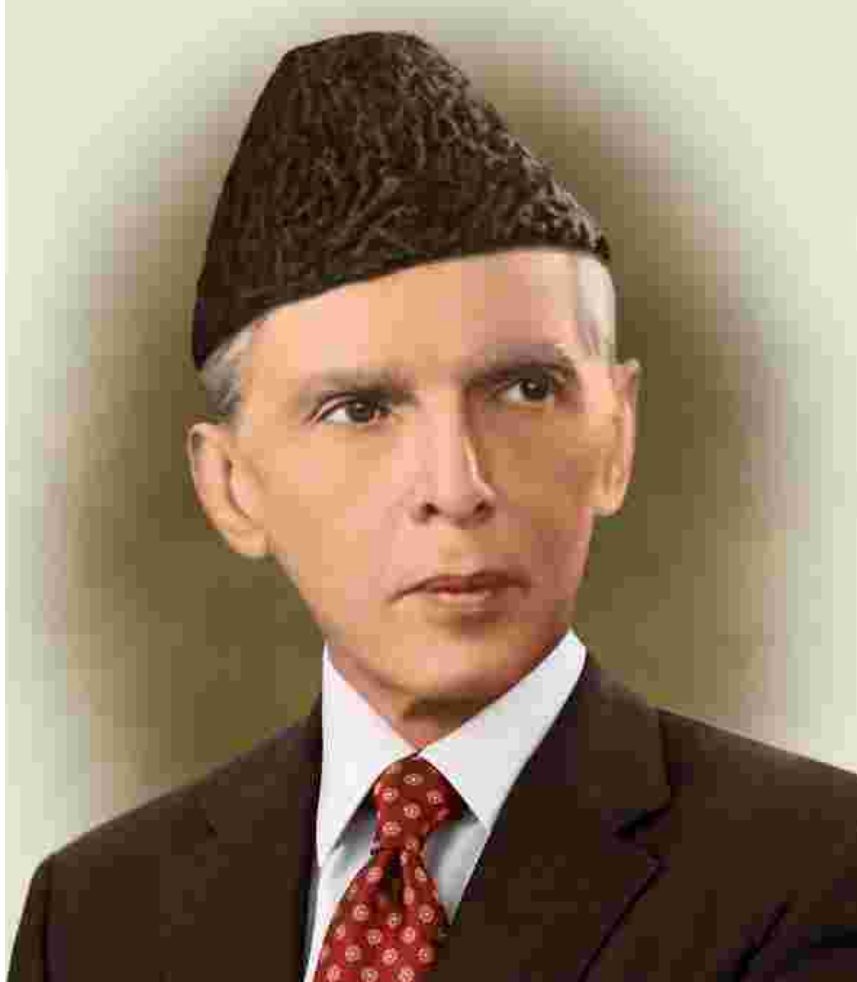


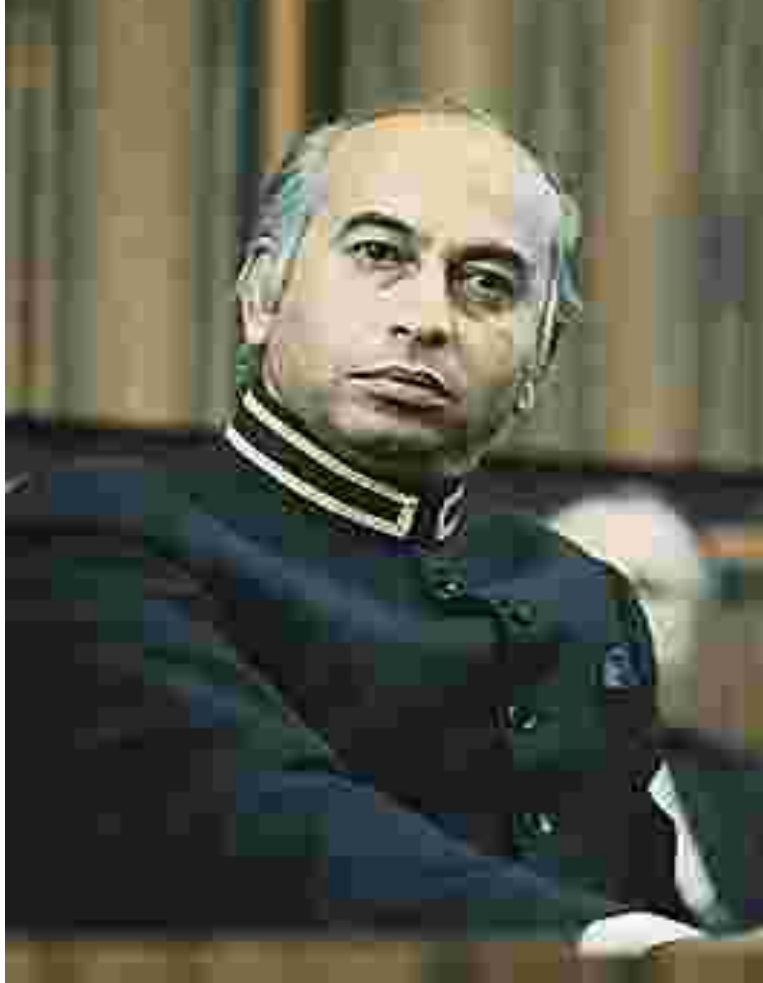
Founder of Pakistan



“Development is being sought in every walk of life and you have to take on this process of development. Are you preparing to take on tomorrow’s responsibilities? Are you building your capacity? Are you trained enough? If no, then go and prepare your self because this is the time to prepare yourself for future responsibilities.”

(Guidance for students through Ministry of Education)

SHAHEED ZULFIQAR ALI BHUTTO
FOUNDER
CHANDKA MEDICAL COLLEGE LARKANA



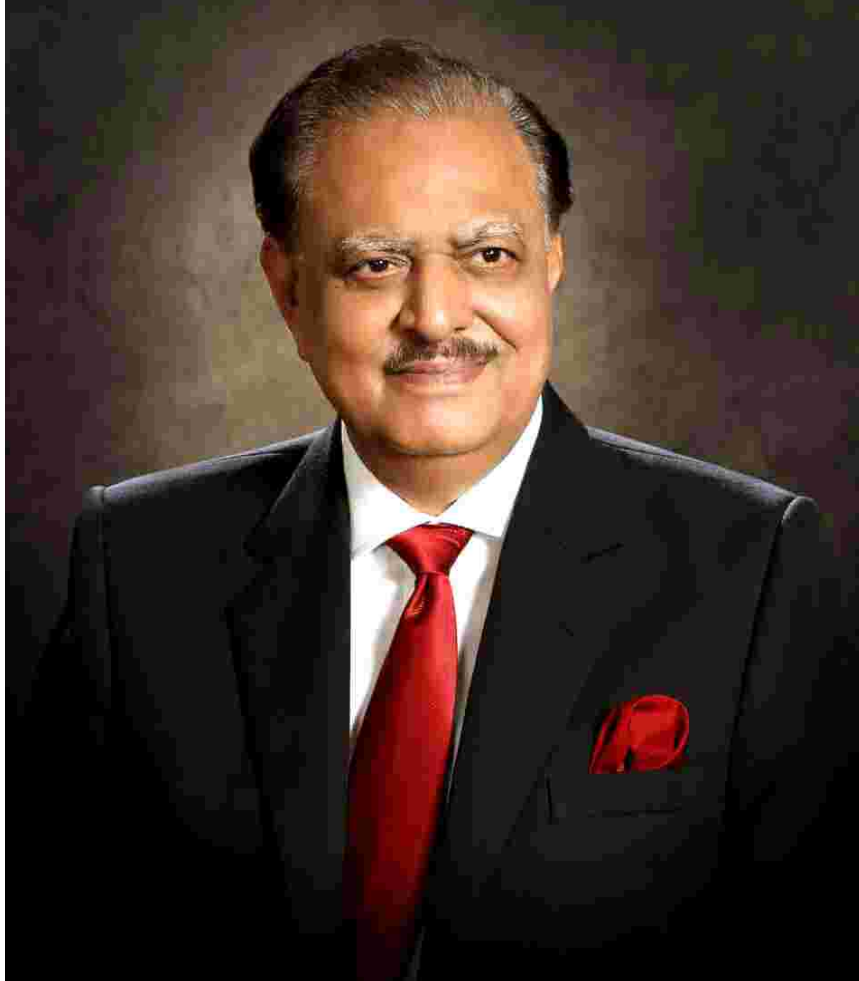
We badly need to gather our thoughts and clear our minds. I am guiding you to seek truth from the facts of the historical conditions of our society and to identify the problems.

SHAHEED MOHTARMA BENAZIR BHUTTO
EX-PRIME MINISTER ISLAMIC REPUBLIC OF PAKISTAN



1953 - 2007
a woman of courage

*“Each journey begins with one small step.
Never hesitate to take that small step if in your
conscience, you believe it to be right.
It takes courage to do what is right.”*



Mamnoon Hussain
President
Islamic Republic of Pakistan



*Mian Muhammad Nawaz Sharif
Prime Minister
Islamic Republic Of Pakistan*



*Dr. Ishrat Ul Ebad Khan
Chancellor &
Governor Of Sindh*



*Syed Qaim Ali Shah
Chief Minister
Government Of Sindh*



*Prof: Dr. Ghulam Asghar Channa
Vice Chancellor
Smbbmu Larkana*

From the Desk of Vice Chancellor

Message

I am delighted to share with you the Prospectus 2015-16. SMBBMU Larkana is very important Institute of Medical Education and patient care in the upper part of Province. Chandka Medical College Larkana, Bibi Aseefa Dental College Larkana and Ghulam Muhammad Mahar Medical College Sukkur are the constituent Colleges. University is committed to the quality education and research in the various fields of medical education and training. Due to globalization of medical education and multitude of challenges lying ahead, the curriculum is designed to meet the international standards and prepare the students to meet the challenges faced by them as doctors. We envisage our students to be not only good and dedicated professional but responsible and Law abiding citizens of Pakistan. In order to help to overcome the difficulty of students in communication, we have established the English language Department, where every chance is provided to improve abilities for interaction in English language.

To enhance and inculcate the habit of using internet for acquiring the knowledge and skill, PERN connectivity and video conference facility is available with other Universities through Higher Education Commission Islamabad. We have established Quality Enhancement Cell to provide us the chance to audit and improve the quality of teaching and training through Internal and peer review system. We continuously arrange the Workshops for our Faculty to improve the skill and technique for imparting medical training to the students to develop in them the degree of enthusiasm, self learning motivation and tolerance to fellows and colleagues. The libraries, Digital Lab, Gymnasium and stadium are available under the supervision and help for sports Gala and competitions are regularly organized.

The Teaching Faculty supervises the student bureau and solves the problems and provide guideline to the students as and when required. Directorate of Research has been established to encourage participation of students in the early years to understand the importance of the research and contribute substantially for Learning Innovation and generation of new knowledge.

Vice Chancellor, Faculty and all the staff members of SMBBMU welcome you to enter the Institute with pride and mission to serve the Nation in particular and ailing humanity in general.

(PROF. DR. GHULAM ASGHAR CHANNA)
Vice Chancellor



*Dr. Amanullah Jokhio
Pro-Vice Chancellor
Smbbmu Larkana*

From the Desk of Pro-Vice Chancellor

Message

Being the Pro-Vice Chancellor of Shaheed Mohtarma Benazir Bhutto Medical University, Larkana, I welcome the Students who will be admitted at this University in the Session 2015-16.

I strongly believe that Quality Education at SMBB Medical University Larkana should be the most significant part of your life and career. It is our aim to transfer our graduates, not only the qualities of good Doctor and helpful patriotic citizen but also they will prove themselves the problem eradicators, scholars and researchers.

Over the time we have expanded Faculty at Chandka Medical College, Larkana, Ghulam Muhammad Mahar Medical College Sukkur, Bibi Aseefa Dental College, Larkana, Benazir Institute of Nursing and Community Health Sciences Larkana and Institute of Pharmacy.

The University is striving at its best to increase the Teaching Faculty but also to enhance the skills of Faculty through Higher qualification and trainings. Our Alumni are spread in the whole world and providing their services in education and health sector.

Inline with the growing research culture in University, SMBBMU Research Journal has been published which would be very useful to strengthen research activities for Teaching Faculty, Post Graduate Students and Under Graduates.

SMBBMU Larkana is offering Under Graduate as well as Post Graduate Degree Programs like M.D, M.S in different subjects, M.Phil, Ph.D and CPCP fellowship in number of Basic and Clinical subjects.

It is my strong hope that Teaching Faculty of Shaheed Mohtarma Benazir Bhutto Medical University, Larkana would provide you very advanced, prosperous and need based learning opportunity along with brilliant future.

Wish you Good luck.

Dr. Amanullah Jokhio
Pro-Vice Chancellor
SMBBMU, Larkana

PROSPECTUS AT A GLANCE

S.NO	CONTENTS	PAGE NO
1	General Information	15
2	SMBBMU, Historical Background	15
3	CMC, Larkana, Historical Background	16
4	GMMMC, Sukkur, Historical Background	19
5	Bibi Aseefa Dental College, Larkana Historical Background	21
6	Administration	22
7	Academics	24
8	Teaching Faculty / Departments	25
9	Integrated Teaching & System of Examination	40
10	Admission Policy / Tagged Districts	44
11	Allocation of Seats	43
12	Over all Distribution of Seats of All Categories	50
13	Seats of various Categories	51
14	Eligibility of Candidates	53
15	Entry Test	54
16	Rules of Admission	55
17	Rules for working out adjusted works in Higher Secondary Certificate (HSC) Examination	58
18	Formula for working out the overall merit	59
19	Admission Committees	60
20	Fees Payment Rules	61
21	Rules of Migration	62
22	Scholarship & Free ships	64
23	Rules of Student Discipline, Conduct, Welfare & Code of Honour for the Students of the University & its Constituent Colleges	65
24	Sports & Extra Curricular Activities	68
25	Library	69
26	Hostels and Mess Rules	70
27	Important Directions for Candidates Regarding Submission of Application Form	74

Editor's Note

This prospectus contains rules and regulations of Shaheed Mohtarma Benazir Bhutto Medical University & its constituent colleges for admission to MBBS/BDS courses, its examinations, allocation of seats, discipline, conduct & welfare for the students.

This prospectus is revised on yearly basis for updating the changes.



- The Rules & Regulations as prescribed in this prospectus are applicable to the following constituent colleges of the university.

- i. Chandka Medical College, Larkana
- ii. Ghulam Muhammad Mahar Medical College, Sukkur
- iii. Bibi Aseefa Dental College, Larkana.

The Prospectus is Prime guideline, containing all the necessary information for the students seeking admission at Shaheed Mohtarma Benazir Bhutto Medical University and its constituent Colleges. It also provides information and details about the rules & regulations for selection & admission criteria for the seats of MBBS/BDS of each district on merit, including the University Education Assistant Program (UEAP), system of examination conduction & hostel allotment.

The Prospectus is reviewed accurately and updated. The university authorities reserve right of any correction, addition & deletion without any prior notice from time to time.

Students on the roll of the constituent colleges of SMBBMU are bound to abide by the rules and regulations as laid down in this prospectus and such changes made thereafter from time to time.

Queries concerning admissions may be asked from:

Prof. Dr. Riaz Ahmed Sheikh
 Director Admissions
 Shaheed Mohtarma Benazir Bhutto
 Medical University, Larkana
 Tel: 074-4752760

Declaration Of Geneva (Code Of Ethics)

TO BE TAKEN AT THE TIME OF BEING ADMITTED AS MEMBER OF THE MEDICAL PROFESSION.

I SOLEMNLY PLEDGE THAT:

- I will consecrate my life to the service of humanity.
- I will give to my teachers the respect and gratitude which is their due.
- I will practice my profession with conscience and dignity.
- The health of my patient will be my first consideration.
- I will respect secrets, which are confided in me.
- I will maintain by all means in my power, the honour and noble tradition of the medical profession.
- I will not permit considerations of religion, nationality, race, party politics or social standing to intervene between my duty and my patients.
- I will maintain the utmost respect for human life from the time of conception and even under threat I will not use my medical knowledge contrary to the laws of humanity.
- I make these promises solemnly, freely and upon my honour.



General information

1.1 THE HISTORICAL BACKGROUND OF SHAHEED MOHATARMA BENAZIR BHUTTO MEDICAL UNIVERSITY LARKANA

History of establishment of Shaheed Mohtarma Benazir Bhutto Medical University dates back when Prof. Akbar Haider Soomro, former Principal & Chairman Academic Council Chandka Medical College on 29th March 1989 during the 1st tenure of Peoples Government requested Honourable the then Prime Minister Mohtarma Benazir Bhutto for upgrading Chandka Medical College to the University during the 1st Convocation chaired by her as 1st Women Prime Minister of the Islamic World.

The request was fully supported and applauded by 500 graduates of CMC to which Mohtarma Benazir Bhutto Shaheed gave a nod.

Subsequently the dream of establishing a Medical University in Lakrana was fulfilled through announcement by the present Honourable Chief Minister of Sindh, Syed Qaim Ali Shah at Garhi Khuda Bux on 12th April 2008. This announcement gave hope to the faculty of CMC and people of Larkana brought jubilation by them.

After the announcement of university by Honourable Chief Minister Sindh, the efforts were enhanced to complete the formalities towards preparation of act for the University to be presented in Sindh Assembly in the form of Bill. The bill for Shaheed Mohtarma Benazir Bhutto Medical University was presented and unanimously passed by Sindh Assembly on 12th September 2008. The act was sent to Honourable Governor of Sindh for Assent and subsequently the Act was notified on 18th October 2008.

The federal Government has kept Rs.5 billion as total project cost for the University for which a PC-1 was submitted and in 1st phase about Rs. 1 billion approved by PSDP and funds are being released by federal government.

The 220 Acre land for the University, located near village Arija, has been acquired. Front portion of the



Prof. Dr. Sikandar Ali Mughal
Registrar SMBBMU Larkana

boundary wall is ready construction of BINACHS and Admin Block is started.

The Ground-Breaking Ceremony of the university was performed by the than President of Islamic Republic of Pakistan Mr. Asif Ali Zardari on 30th December 2009. A team of Higher Education Commission (HEC) officials along with medical experts visited the university and accredited it.

Honourable Chief Minister of Sindh Syed Qaim Ali Shah inaugurated "Benazir Health Awareness FM Radio" on 5th January 2012. SMBBMU is the only leading university throughout the country, for introducing Health Awareness FM Radio programs, on frequency of 103 MHz in Larkana Region with the range of 40 Kilometers, its range will be extended in due course of time.

1.2 HISTORICAL BACKGROUND OF CHANDKA MEDICAL COLLEGE, LARKANA



Pro. Dr. Sher Muhammad Shaikh
PRINCIPAL, CMC, LARKANA

HISTORY

At the time of independence, Sindh province had only one medical college with the name of Dow Medical College, Karachi. Later on another Medical College was established with the name of Liaquat Medical College, Jamshoro. These both Medical colleges were far from upper Sindh. People, particularly the poor, had difficulty to go a long way for treatment, so a need for new medical college was felt which could facilitate the people of upper Sindh at their door steps, the then Prime Minister of Pakistan Shaheed Zulfiqar Ali Bhutto who belonged to Larkana ordered the opening of a medical college in Larkana. Chandka Medical College came into being on 20th April, 1973 inspired from the old name of Larkana which was CHANDKO. The first batch admitted was of 150 students This year 44th batch will be admitted of 250 students.

FACILITIES

CMC Academic block comprises of two lecture halls, laboratories, Dissection Hall, Museums etc. A gigantic auditorium hall has been added, which is fully air-conditioned & has a seating capacity of one thousand persons. Presently an old auditorium hall has also been renovated which has total 400 seating capacity.

A gymnasium for indoor games, mini stadium for out door games, Central Canteen, Jamia Mosque has been added.

CMC has seven Basic Department in the premises of CMC Campus and 24 Clinical Departments in different hospital blocks.

AFFILIATION/ RECOGNITION

CMC is constituent part of Shaheed Mophtarma Benazir Bhutto Medical University (SMBBMU) Larkana since 2009. All examinations are being conducted by SMBBMU Larkana.

CMC is recognized by Pakistan Medical & Dental Council (PMDC) and also by General Medicine Council (GMC) United Kingdom & CPSP . FCPS, MD, M.Phil, MCPS and various other diploma courses. The College Physicians & Surgeons has also established its regional center at CMC Larkana. CPSP, has started conducting FCPS-I, FCPS-II and MCPS Examination CMC, Larkana center since 1999. The results (Passing Percentage) of candidates appearing theory examinations is comparable with other centers of the country.†It is included in Health Directory of WHO and FAMER.

LIBRARY

CMC has an elegant library, it has three large air-conditioned reading rooms. There are thousands of text books of latest editions on different subjects. Scientific journals of almost of all specialties are also available. A separate portion of library is fixed for girls on ground floor.

DIGITAL LIBRARY facility provided by HEC Islamabad is also available in CMC, which provides more than 25000 latest online Journals and books free of cost. It helps students and teaching staff to access latest data and to do their research work. Internet facility is also available.

CPSP LIBRARY & REGIONAL CENTRE has been working which provides the postgraduate facility at the door steps to the Chandkian's. It has the facility of centrally air-conditioned library with seating capacity of 75 students, text books, stand by generator, office for Regional Director & administrative staff. Besides books, internet facility, there is an online facility of downloading about 1000 medical journals. CPSP has established theory examination centers for FCPS I & II, at Larkana. Various workshops and Basic Medical Science Courses are also organized by CPSP at Chandka Medical College, Larkana.

INFORMATION TECHNOLOGY DEPARTMENT

is playing a pivot role in the academics, teaching, research and learning of students & Faculty of CMC Larkana. This department is supervised by a Senior Computer Engineer. I.T subject is being taught regularly to 1st & 2nd Year MBBS and BDS students. Besides these classes, I.T Training Courses are regularly conducted for the faculty and staff of the college.

COMPUTER LABORATORY of CMC is fully equipped with latest Computers, Laptops, Multimedia Projectors, Smart Interactive Boards, Scanners, Printers, etc. This lab is fully networked and has high speed internet facility through optic fiber connectivity (PERN). Different departments and offices have been networked and Internet facility is also provided to them.

VIDEO CONFERENCE ROOM has been established and regularly online workshops, seminars, special lectures are held. This Video Conference Room is connected worldwide and with all universities of Pakistan for different academic programs.

ACADEMIC ACTIVITIES

Convocations, Symposia, Workshops, Conferences, Clinico-Pathological Conferences and Special lectures are regularly held in CMC Larkana. Till today 9 Convocations for degree awarding and 12 CMC Annual Symposia have been conducted. Many National & International Conferences like Orthocon, Paediatric Medicine, Paediatric Surgery, Cardiology, Ophthalmology, Neurology, Psychiatry, Pulmonology, Pathology have been held. One month Professionals Competency Enhancement Program for Teachers (PCEPT) was also organized by CMC Larkana.

AWARENESS PROGRAMS

Different World health days are being organized by CMC, like World Hepatitis Day, World Diabetic Day, Walk for cause, World No Smoking Day, World Stroke Day, World Mental Day, World Mothers Day and Universal Children Day.

SAMBARA MAGAZINE

This is regular publications with the name of SAMBARA students magazine & Chandka Bulletin.

EXTRA-CURRICULAR ACTIVITIES

Different programs are regularly organized by students in which very first event is holding of Seerat u Nabi Conference which is followed by Lateef Day, Annual Function, Talent Show, Quizz programs, debate competitions and lastly Sports week.



POSTGRADUATION

M.Phil and Diploma for as much as eighteen (18) additional courses. A team of College of Physicians and Surgeons of Pakistan (CPSP) also recognized various disciplines of University and admissions in these courses have been started.

CMC HOSPITAL

On clinical side there are three complexes of hospitals. Number one, city block comprising of, OPD block having all departments including Radiology & Physiotherapy; medical unit-II; chest disease unit; ENT; ophthalmology block, cardiology block & causality with orthopedic ward. Number two, the teaching hospital block comprising of medical unit-I; surgical units I & II; and urology department, which is equipped with Lithotripter and latest instruments for into Endourology. The third complex comprising of Sheikh Zaid Women Hospital with Gynae/Obs: departments; children hospital & paedes surgery hospital.

THE CENTRE OF EXCELLENCE

The Department of Paediatric Medicine Chandka Medical College SMBB Medical University Larkana is recognized as international training center for various trainings ie IMNCI, ENCC, PCPNC, SAM, IYCF and TB dots etc.

Recently Department of Paediatrics is declared the Centre of Excellence for maternal, neonatal and child health. The Centre of Excellence was inaugurated by Prof. Ghulam Asghar Channa-Vice Chancellor SMBB Medical University along with Prof. Saifullah Jamro-Dean Faculty of Medicine & Allied Science SMBB Medical University Larkana and other faculty members Following facilities are available in the Centre of Excellence:



Academic Facilities

- Triage
- Under five Clinic
- Counselling Room
- Vaccination Center
- TB Dots Clinic
- Play Area
- Sick Newborn Care Unit
- Rooming inn for newborn
- Nutrition Stabilization Center
- Diarrhea treatment Center
- SAMOP/ Malnutrition Clinic

Health Facilities

- Conference hall
- Tele Conference Lab
- Seminar Rooms
- Rooms for Group Discussions
- Digital Libraries
- Lending Libraries
- Skill Labs
- OPD Class Room for IMNCI Training
- DEWS/DHI Surveillance Center
- Children Art Gallery

A 302 bedded CMC Teaching near college campus is also available.

Full fledged Urology & Nephrology Departments have been established. It comprises of medical and surgical specialties beside lithotripter and dialysis facilities. New casualty block with X-Rays facility and operation theater has been constructed along with new OPD building to complete the Chandka Medical College Hospital complex with total bed strength of 1352. All complexes have about 1352 patients as indoor cases. These departments are having well qualified senior as well as junior staff according to requirement of PMDC.

For diagnostic purpose there are modern laboratories with semi automatic analyzers in different sections of hospitals which give routine laboratory facility along with screening of blood. The laboratory at college campus provides facility of special tests like Biopsies, Bone Marrow Examination, FNACs & Microbiology like culture of various biological fluids.

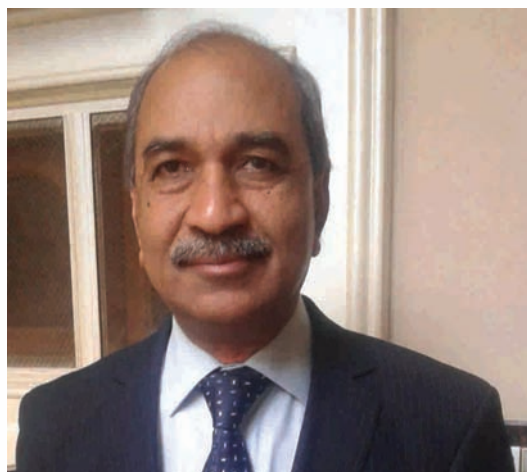
Radiology Department has X-Ray, Ultrasound and Color Doppler facilities for advanced radiological investigations like CT scan and MRI scan, a separate building has been built besides OPD Block in city hospital and CT scan machine has started functioning. Besides this accident and emergency department is recently started in a new building. Buildings of institute of dermatology neurosciences dental OPD, Madam Faryal Talpur Institute of Cardiothoracic surgery are under construction.

For diagnostic purpose there are modern laboratories with semi automatic analyzers in different sections of hospitals which give routine laboratory facility along with screening of blood. The laboratory at college campus provides facility of special tests like Biopsies, Bone Marrow Examination, FNACs & Microbiology like culture of various biological fluids

LINAR Larkana Institute of Nuclear Medicine and Radiotherapy is an excellent facility for the diagnosis and treatment of cancer patients and also teaching of 4th year medical students.



1.3 GHULAM MUHAMMAD MAHAR MEDICAL COLLEGE SUKKUR



Prof. Dr. Haresh Chand
Principal GMMMC Sukkur

The hilly city of Sukkur extends from Lansdowne Bridge to Lloyd's Barrage along the right bank of River Indus. Historically centuries ago Muhammad Bin Qasim entered Sindh at Arrore near Sukkur. The Population of upper Sindh is growing rapidly in the recent times and the need for Medical Education and services in Health sector is increasing. The idea and the place of Sukkur as the central point for establishment of Medical College and tertiary care Hospital was gaining grounds in the heart and minds of decision makers and people at large.

Finally in the evening of 2nd September, 2003 the foundation stone of Ghulam Muhammad Mahar Medical College (GMMMC) Sukkur was laid down by Sardar Ali Muhammad Mahar the than CM Sindh. The 1st Batch comprising of 40 students started the classes in October, 2003 and now, many of the students from 1st Batch have done FCPS Part-I in various fields and many are doing residency in America. Every year 100 students belonging to District Sukkur, Ghotki and Khairpur are admitted in this College.

Ghulam Muhammad Mahar Medical College Sukkur is housed in four beautiful buildings of Directorate Health

Services Sukkur and its Masoom Shah Hostel Sukkur, Health Technician School and new building of Library.

Pakistan Medical & Dental Council Islamabad inspected Ghulam Muhammad Mahar Medical College Sukkur on 25th April, 2008 and thoroughly re-inspected it on 22nd November, 2008. At the best of satisfaction the team recommended for registration. Federal Ministry of Health Government of Pakistan Islamabad has notified it as recognized Medical College and included it in the gazette of World Health Organization (WHO). The College has been included in the world directory of the Medical Schools.

GMMMC Sukkur is constituent part of Shaheed Mohtarma Benazir Bhutto Medical University (SMBBMU), Larkana.

New Complex

An area of 53.8 Acres of land situated at the main by-pass road near Sukkur Township, Sukkur has been acquired for GMMMC as well as 1200 bedded teaching hospitals. The foundation stone laying ceremony was performed on 30th May, 2005. The private consultancy firm has designed the Master Plan, detailed drawing and shall be supervising the execution works for the new complex.

Facilities Available

Although youngest of Government sector Medical Colleges, yet it is not behind any of them in academics. Basic sciences facility is especially very strong and almost complete with Professor and Associate Professor in almost all departments. The brilliance is shown by students acquiring good marks and snatching top positions in University.

Laboratories are well equipped with latest gadgets, like new respirometers labs, treadmill, Power Lab etc.

Anatomy Models and books are in abundance. Seminar rooms are separate in each department. Museums also show the hard works put in by collecting students.

Keeping in view the hot climate of the northern part of Sindh, the academic building like the Lecture hall, Dissection hall, Demonstration Rooms, Seminar Rooms, Laboratories, libraries and offices of faculty members are air-conditioned. Modern way of teaching has been adopted at this Medical College with the latest Audio Visual teaching aids.

I.T Resource Center.

An air-conditioned hall with 22 latest computers with LCD monitors serves to full fill the appetite of students to get knowledge from every nook and corner of world.

Cafeteria

Well furnished cafeteria with required facilities is available adjacent to the main gate of the college.

Transport Facility

Five Luxury buses have been in service for students and covering a range of 20-30km east and west side daily from Sukkur to Khairpur and Sukkur to Pano Akil on motorway.

Two Air-conditioned 14 and 22 seated Luxury A.C coaches are available for staff and Students.

Extracurricular activities.

Indoor games facilities like badminton etc are available at hostels and every year after exhaustive trials sports week is celebrated with full fun and fair and awards. One week for Sindhi, Urdu and English debates as debates week is a once yearly feature. Whole college with full staff and students participation makes annual function of college a itreat to watchi for whole city and surrounding, for commons and gentry. Each batch visits different Medical Colleges in Pakistan along with historic places.

Hostel Accommodation.

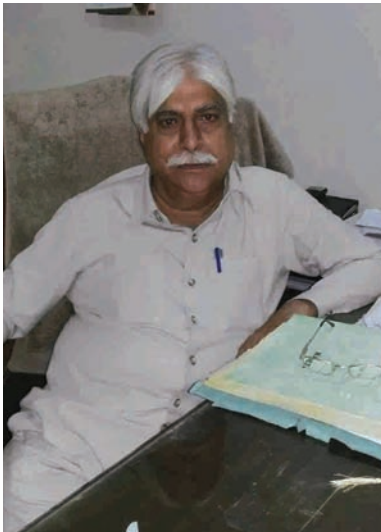
There are two boys hostel for about 100 student accommodation and four Girls Hostel for about 150 students, located near the College and inside the city.

Attached Teaching Hospitals.

There are 3 (Three) attached Teaching Hospitals. Main is Ghulam Muhammad Mahar Medical College Teaching Hospital Sukkur (Civil Hospital Sukkur) having 300 beds with separate Medical, Surgical, Chest, Paeds, Gynae & Obst, Cardio Blocks, Urology with lithotripter, Paeds Surgery and Orthopedic departments. In city there is a separate Hospital for ENT and EYE problems with-in patient out-patients facility called as Anwar Piracha Government Hospital. About 15 K.M away is GMMMC Teaching Hospital Khairpur (Civil Hospital Khairpur) which has separate units of Medicine / Surgery and Gynae & obst.



1.4 HISTORICAL BACKGROUND OF BIBI ASEefa DENTAL COLLEGE, LARKANA



Prof. Noor Ahmed Khoso
Principal BADC Larkana

On the occasion of 57th birth day Anniversary of Shaheed Mohtarma Benazir Bhutto on 21st June 2011, His Excellency Ex-President of Pakistan Mr. Asif Ali Zardari was kind enough to spare time and inaugurated BADC Larkana. The name of Chandka Dental College, was changed to Bibi Aseefa Dental College on account of Health Services rendered by Bibi Aseefa as incharge of Polio Programe Pakistan.

Bibi Aseefa Dental College in renovated building of CMC Hospital, Larkana the new building of college is completed. New equipment worth Rs: 6.00 million has been purchased and installed at the building and required faculty has been posted. Bibi Aseefa Dental College is one of the constituent colleges of SMBBMU, Lakana.

I feel proud to given a message for the peoples of Larkana and its catchment area, people of this area are very lucky that Shaheed Mohtarma Benazir Bhutto Medical University, Larkana, is providing them the facilities of specialized Dental treatment at their door step through Bibi Aseefa Dental College, Larkana. People of this area must knows the importance of dental treatment.

Oral health is major problem of our community not only in this area but in whole world being a dental personnel, it is our moral duty to give knowledge of this specialty to our community because we are also part and personal this community keeping in view Bibi Aseefa Dental College, Larkana started its admission for BDS. Not only to provide treatment, but provide dental personnel for this area from their community with grace of God we started admission three batches were admitted and their teaching and clinical training are successfully going on, now the admission of 4th batch 2014 is under process.

I pay regards to Khursheed Ahmed Junejo Ex-Zila Nazim who took initiative of dental college in this regard not forget the services of their Ex-Director dental services of Sindh Dr. Ghulam Hussain Shaikh belongs to this area he tried his best inform of dental college at Government level to move the paper work at his level as my knowledge is concerned.

I would like give message to our students who were admitted and will get admission in this college that they do not discourage themselves. There future is bright and shining in the field of dentistry. Only and only they should work hard and their thinking should be that you are the son of this earth after graduation your services should be for the peoples of this area and our nation.

In the end I give message to leaders ,politicians and Government authorities to pay attention to this little baby Bibi Aseefa Dental College, that it is still in its infancy and need help for the complete growth from infancy to adult hood and INSHALLAH Bibi Aseefa Dental College, would become centre of excellence to provide complete health facilities like Facial trauma, Oral cancer, Orthogenetic surgery, reconstructural, dental care to people of this area.

Further I hope and pray for every success and prosperity of this college and the students.

SHAHEED MOHTARMABENAZIR BHUTTO MEDICAL UNIVERSITY LARKANA

1.5 ADMINISTRATION

a. Statutory Officers

Name & Designation	OFFICES	
	Tel. No:	Fax: No.
Vice Chancellor Prof. Ghulam Asghar Channa MBBS, FCPS	074-9410908	074-4752411
Pro Vice Chancellor Dr. Amanullah Jokhio MBBS,DSS	074-9410908	074-4752411
Registrar Prof. Sikandar Ali Mughal MBBS,FCPS	074-9410907	074-4752408
Dean Medicine & Allied Specialties Prof.Saifullah Jamro MBBS, DCH, MCPS, FCPS	074-9410715	074-9410511
Dean Surgery & Allied Specialties & Principal CMC Larkana Prof.Sher Muhammad Shaikh MBBS, FCPS	074-9410906,	074-475241
Dean Faculty of Basic Medical Sciences Prof: Riaz Ahmed Shaikh, MBBS, M.Phil	074-9140750 (Ext:364)	074-9410511
Dean Faculty of Community & Public Health Sciences, Prof: Niaz Muhammad Shaikh MBBS, DPH	071-9310118	071-9310117
Principal GMMMC, Sukkur Prof. Dr. Haresh Chand MBBS, M.Phil	071-9310118	071-9310117
Controller of Examinations Post Graduate Studies Dr. Shahid Jamal Siddiqui MBBS, DOMS, FCPS	074-9410906	074-475241



b- Non-statutory Officers

Name & Designation	OFFICES	
	Tel. No:	Fax: No.
Director Post Graduate Studies Prof: Aijaz Ahmed Memon MBBS,FRCS,FCPS	074-4752442	
Director Quality Enhancement Cell Prof: Abdul Mannan Bhutto MBBS,Ph.d	074-9410907	074-4752408
Director Research Prof: Hakim Ali Abro MBBS,FCPS	074-9410750	
Director/ Incharge Medical Education & Inspector of Colleges Prof: Dr. Abdul Hameed Shaikh MBBS, FCPS	074-9410750	
Director Admissions Prof. Dr. Riaz Ahmed Shaikh MBBS, M.Phil	074-4752760	074-9410511
Director Planning & Development Mr. Noorullah Malik	074-4752515	
Vice Principal, CMC, Larkana Prof: Dr. K.Das MBBS, FCPS	074-9410750 (Ext: 306)	074-9410511
Vice Principal, GMMMC,Sukkur Dr. Ghulam Haider Rind MBBS, FCPS	071-9310118	071-9310117
Vice Principal, BADC, Larkana Dr. Qaimuddin Shaikh BDS, MS	074-4752509	
Incharge Students Affairs Dr. Hifazuddin Abro MBBS	074-9410750	
I.T Department Eng: Roshan Ali Shaikh B.E(Computer System) System Analyst & Head of IT Department	074-9410750 (Ext: 314)	

2. Academics

2.1 OBJECTIVES OF UNIVERSITY FOR UNDERGRADUATE DEGREE PROGRAMS

The candidate who seeks admission in degree program at Shaheed Mohtarma Benazir Bhutto Medical University, Larkana should have aptitude to follow the instructions at university level.

The objective of degree program at SMBBMU is to provide a good account of fundamentals of Medical Sciences, withstanding the current developments in the Medical field. Basic knowledge is supplemented with latest applied approaches during clinical training including diagnostic and radiological investigations. Comprehensive programs are designed to inculcate self-learning skills and analytical approaches to solve medical problems, ultimately producing young doctors capable of delivering effective health services to the masses or undertaking advance studies and research.

2.2 UNDERGRADUATE COURSES

The University & its constituent Colleges presently offer a five year degree course with award of MBBS degree. Both the constituent colleges shall be admitting the students for MBBS course of five years. BDS students shall be admitted to Bibi Aseefa Dental College Larkana, they will be offered a four year course leading to award of BDS.degree.

2.3 THE FACULTIES

- i. The Faculty of Basic Medical Sciences. Anatomy, Physiology, Biochemistry, Pharmacology, Pathology, Forensic Medicine & toxicology.
- ii. The Faculty of Medicine & Allied Sciences Medicine, Paediatrics, Chest Medicine, Cardiology, Dermatology, Neurology, Nephrology, Psychiatry & Nuclear Medicine.
- iii. The Faculty of Surgery & Allied Sciences General Surgery, Orthopaedic Surgery, Radiology, Neurosurgery, Urology, Paediatric Surgery, Gynaecology & Obstetrics, E.N.T., Ophthalmology, Anesthesiology & Radiology.
- iv. The Faculty of Community Medicine & Public Health

Sciences Community Health Sciences Nursing & Paramedical Sciences.

- v. The Faculty of Dentistry

2.4 MBBS Course

Five Year plan

There is Annual examination System reintroduced in university and its constituent colleges. There will be university examination at end of each year.

2.5 BDS Course

Four year plan

There is annual examination system reintroduced in university and its constituent college. There will be university examination at end of each year.



2.6 THE FACULTIES

2.6.1: Chairman of Basic Medical Sciences

S.No	Departments	Chairman / Incharge	Qualification
1	Anatomy	Dr. Abdul Latif Jokhio	MBBS, M.Phil
2	Physiology	Dr. Amar Lal Gurbukhshani	MBBS, M.Phil
3	Biochemistry	Dr. Muhammad Hanif Shaikh	MBBS, M.Phil
4	Pharmacology	Dr. Nazir Ahmed Shah	MBBS, M.Phil
5	Pathology	Prof. Dr. Haresh Chand	MBBS, M.Phil
6	Forensic Medicine & Toxicology	Dr. Rasheed Ahmed Pathan	MBBS, DMJ

2.6.2: Chairman of Medicine & Allied Sciences

S.No	Departments	Chairman / Incharge	Qualification
1	Medicine	Prof. Aftab Hussain Shah	MBBS, FCPS
2	Paediatrics	Prof. Khurshid Ahmed Abbasi	MBBS, DCH, MCPS, Ph. D
3	Chest Medicine	Prof. Riaz Hussain Shah	MBBS, FCPS
4	Neurology	Prof. Alam Ibrahim Siddiqui	MBBS, FCPS
5	Cardiology	Dr. Bashir Aman Shaikh	MBBS, FCPS
6	Dermatology	Dr. Irfan Ahmed Shaikh	MBBS, FCPS
7	Psychiatry	Dr. Rahmat Ali Wagan	MBBS, FCPS

2.6.3: Chairman of Surgery & Allied Sciences

S.No	Departments	Chairman / Incharge	Qualification
1	General Surgery	Prof. K. Das	MBBS, FCPS
2	Orthopedics Surgery	Prof. Jugdesh Kumar	MBBS, MS
3	Radiology	Prof. Dr. Abdul Haleem Shaikh	MBBS, DMRD
4	Neurosurgery	Prof: Ali Akbar Bhand	MBBS, FCPS
5	Gynaecology & Obstetrics	Prof. Fouzia Kashif	MBBS, FCPS
6	Urology	Prof. Abdul Rasheed Shaikh	MBBS, MS
7	Paediatric Surgery	Dr. Abdul Salam Abbasi	MBBS, FCPS
8	Otorhinolaryngology (ENT)	Dr. Pir Bux Magsi	MBBS, DLO, FCPS
9	Ophthalmology	Dr. Shahid Jamal Siddiqui	MBBS, DOMS, FCPS
10	Anaesthesiology	Dr. Ahmeduddin Soomro (Incharge)	MBBS, FCPS

CHANDKA MEDICAL COLLEGE, LARKANA

2.6.4: BASIC SIDE FACULTY

DEPARTMENT OF ANATOMY

S.No	Name of Doctor	Designation	Qualification
1	Dr. Abdul Latif Jokhio	Associate Professor	MBBS, M.Phil
2	Dr. Shahid Hussain Soomro	Assistant Professor	MBBS, FCPS
3	Dr. Khalid Rasool Shaikh	Senior Lecturer	MBBS
4	Dr. Khub Chand	Senior Lecturer	MBBS
5	Dr. Khaliq-ur-Rehman Soomro	Senior Lecturer	MBBS
6	Dr. Manzoor Ali Kandhro	Senior Lecturer	MBBS, DOMS
7	Dr. Sajjad Ahmed	Senior Lecturer	MBBS
8	Dr. Aijaz Ahmed Shaikh	Lecturer	MBBS
9	Dr. Abdul Waheed Shaikh	Lecturer	MBBS
10	Dr. Amber-u-Nisa Soomro	Lecturer	MBBS
11	Dr. Pervaiz Laghari	Lecturer	MBBS
12	Dr. Muhammad Asif Chandio	Lecturer	MBBS
13	Dr. Suhail Iqbal Shaikh	Lecturer	MBBS
14	Dr. Fareena Mustafa Soomro	Lecturer	MBBS
15	Dr. Khalid Hussain Shaikh	Lecturer	MBBS
16	Dr. Muhammad Parial Shahani	Lecturer	MBBS

DEPARTMENT OF PHYSIOLOGY

S.No	Name of Doctor	Designation	Qualification
1	Dr. Abdul Wahab Shaikh	Associate Professor	MBBS, M. Phil
2	Dr. Ashok Kumar Oad	Lecturer	MBBS
3	Dr. Ashok Kumar Ahuja	Lecturer	MBBS
4	Dr. Muzaffar Ali Abro	Lecturer	MBBS
5	Dr. Lubna Adnan	Lecturer	MBBS
6	Dr. Rehana Sadhayo	Lecturer	MBBS
7	Dr. Benazir Abbasi	Lecturer	MBBS

DEPARTMENT OF BIOCHEMISTRY

S.No	Name of Doctor	Designation	Qualification
1	Dr. Muhammad Hanif Shaikh	Professor	MBBS, M.Phil
2	Mr. Dost Muhammad Kalhoro	Assistant Professor	M.Sc, M.Phil
3	Dr. Ghulam Sarwar Shaikh	Assistant Professor	MBBS, M.Phil
4	Dr. Ambrat Lal	Senior Lecturer	MBBS
5	Dr. Arjan Das	Senior Lecturer	MBBS
6	Dr. Inamullah Soomro	Lecturer	MBBS
7	Dr. Mujeeb-U-Rehman	Lecturer	MBBS
8	Dr. Sarmad Jamal Siddiqui	Lecturer	MBBS
9	Dr. Aneela Qureshi	Lecturer	MBBS

DEPARTMENT OF PATHOLOGY

S.No	Name of Doctor	Designation	Qualification
1	Dr. Ghulam Murtaza Pathan	Professor	MBBS, M. Phil
2	Dr. Akbar Ali Soomro	Professor	MBBS, M. Phil
3	Dr. Saleem Akhtar Shaikh	Associate Professor	MBBS, M. Phil
4	Dr. Ghulam Shabir Shaikh	Assistant Professor	MBBS, M. Phil
5	Dr. Jai Kirshan	Assistant Professor	MBBS, M. Phil
6	Dr. Abdul Waheed Surahio	Senior Lecturer	MBBS,
7	Dr. Manzoor Hussain Chandio	Senior Lecturer	MBBS
8	Dr. Haque Nawaz Sandano	Lecturer	MBBS
9	Dr. Fahmeeda Shaikh	Lecturer	MBBS (P.G)
10	Dr. Yasmeen Rasheed Bhutto	Lecturer	MBBS
11	Dr. Hifazuddin Ahmed Abro	Lecturer	MBBS
12	Dr. Sarfaraz Tunio	Lecturer	MBBS
13	Dr. Ashraf	Lecturer	MBBS
14	Dr. Abdul Hameed	Lecturer	MBBS
15	Dr. Abdul Qadir	Lecturer	MBBS
16	Dr. Sajjad Ali	Lecturer	MBBS

DEPARTMENT OF PHARMACOLOGY

S.No	Name of Doctor	Designation	Qualification
1	Dr. Riaz Ahmed Shaikh	Professor	MBBS, M. Phil
2	Dr. Barkat Ali Shaikh	Professor (current charge basis)	MBBS, M. Phil
3	Dr. Dial Das	Assistant Professor	MBBS, M. Phil
4	Dr. Ali Gul Tunio	Assistant Professor	MBBS, M. Phil
5	Dr. Riaz Hussain Mangrio	Lecturer	MBBS, M. Phil
6	Dr. Barkat Ali (T) Shaikh	Lecturer	MBBS
7	Dr. Muhammad Ali Shah	Lecturer	MBBS
8	Dr. Abdul Basit Gopang	Lecturer	MBBS
9	Dr. Andeep Kumar	Lecturer	MBBS
10	Dr. Doulat Ram	Lecturer	MBBS (P.G)

DEPARTMENT OF FORENSIC MEDICINE

S.No	Name of Doctor	Designation	Qualification
1	Dr. Ghulam Qadir Kaheri	Professor (contract basis)	MBBS,DMJ
2	Dr, Zavar Hussain Khichi	Professor (current charge basis)	MBBS,DMJ (P.G)
3	Dr. Ikram Ahmed Tunio	Senior Lecturer	MBBS,DMJ (P.G)
4	Dr. Ahmed Khan Abro	Senior Lecturer	MBBS
5	Dr. Muhammad Rafique Shaikh	Lecturer	MBBS, (P.G)
6	Dr. Inayatullah Magsi	Lecturer	MBBS
7	Dr. Ashok Kumar Pirthiani	Lecturer	MBBS
8	Dr. Hafizullah Abro	Lecturer	MBBS
9	Dr. Abdul Aziz Soomro	Lecturer	MBBS
10	Dr. Abdul Hafeez Abro	Lecturer	MBBS



DEPARTMENT OF COMMUNITY MEDICINE

S.No	Name of Doctor	Chairman / Incharge	Qualification
1	Prof. Dr. Niaz Muhammad Shaikh	Professor	MBBS, DPH
2	Dr. Saeed Ahmed Shaikh	Associate Professor	MBBS, MPH
3	Dr. Shabir Ahmed Larik	Assistant Professor	MBBS, MPH
4	Dr. Ahmed Bux Shaikh	Senior Lecturer	MBBS
5	Dr. Shabana Jamshed Abro	Senior Lecturer	MBBS
6	Dr. Ahmad Nawaz Magsi	Senior Lecturer	MBBS
7	Dr. Akhlaque Ahmed Shaikh	Lecturer	MBBS
8	Dr. Ghulam Nabi Shaikh	Lecturer	MBBS
9	Dr. Farheen Soomro	Lecturer	MBBS
10	Dr. Vijay Kumar	Lecturer	MBBS
11	Dr. Fareeda Baloch	Lecturer	MBBS
12	Dr. Dilijan Mugheri	Lecturer	MBBS
13	Dr. Khairunnisa Shaikh	Lecturer	MBBS

CLINICAL SIDE

DEPARTMENT OF MEDICINE

S.No	Name of Doctor	Chairman / Incharge	Qualification
1	Dr. Syed Aftab Hussain Shah	Professor	MBBS, FCPS
2	Dr. Hakim Ali Abro	Professor	MBBS, FCPS
3	Dr. Habib-u-Rehman Qadri	Professor	MBBS, FCPS
4	Dr. Azizullah Jalbani	Associate Professor	MBBS, FCPS
6	Dr. Koro Mal	Assistant Professor (current charge basis)	MBBS, FCPS
7	Dr. Muhammad Aslam Soomro	Assistant Professor	MBBS, DTCD, FCPS
8	Dr. Ghulam Yaseen Abro	Assistant Professor	MBBS, FCPS
9	Dr. Shaikh Khalid Muhammad	Assistant Professor (OPS)	MBBS, FCPS
10	Dr. Ali Haider Mugheri	Assistant Professor	MBBS, FCPS
11	Dr. Mujeeb ur Rehman Abro	Assistant Professor	MBBS, FCPS
12	Dr. Imdad Ali Ansari	Assistant Professor	MBBS, FCPS
13	Dr. Mumtaz Ali Chutto	Assistant Professor	MBBS, FCPS
14	Dr. Zahid Ali Shaikh	Senior Registrar	MBBS, FCPS
15	Dr. Barkat Ali	Senior Registrar	MBBS, FCPS

DEPARTMENT OF SURGERY

S.No	Name of Doctor	Designation	Qualification
1	Dr. Aijaz Ahmed Memon	Professor	MBBS,FRCS,
2	Dr. Sher Muhammad Shaikh	Professor	MBBS,FCPS
3	Dr. Kheo Ram Dholia	Professor	MBBS,FCPS
4	Dr. Afsar Ali Bhutto	Associate Professor	MBBS,FCPS
5	Dr. Rajib Ali Deenari	Associate Professor	MBBS,MS
6	Dr. Muhammad Saleem Shaikh	Associate Professor	MBBS,FCPS
7	Dr. Abdul Ghani Shaikh	Assistant Professor	MBBS,FCPS
8	Dr. Waqar-e-Sahar Shah	Assistant Professor	MBBS,FCPS
9	Dr. Ghulam Shabir Shaikh	Assistant Professor	MBBS,FCPS
10	Dr. Yasmeen Bhatti	Assistant Professor	MBBS,FCPS
11	Dr. Akleema Abro	Assistant Professor	MBBS,FCPS
12	Dr. Muhammad Ayoub Jalbani	Assistant Professor	MBBS,FCPS
13	Dr. Aisha Shaikh	Assistant Professor (OPS)	MBBS,FCPS
14	Dr. Saira Shaikh	Assistant Professor (OPS)	MBBS,FCPS
15	Dr. Abdul Sattar Abro	Lecturer	MBBS,FCPS

DEPARTMENT OF GYNAECOLOGY & OBSTETRICS

S.No	Name of Doctor	Designation	Qualification
1	Dr. Rafia Baloch	Professor	MBBS,DGO,FCPS
2	Dr. Fouzia Kashif	Professor	MBBS,FCPS
3	Dr. Shahida Magsi	Professor	MBBS,FCPS
4	Dr. Shaista Tabasum	Associate Professor	MBBS,FCPS
5	Dr. Naila Yousif Memon	Assistant Professor	MBBS,MS (GYN:)
6	Dr. Shazia Shaikh	Assistant Professor	MBBS,FCPS
7	Dr. Shabnam Naz Shaikh	Assistant Professor	MBBS,FCPS
8	Dr. Afshan Bhatti	Senior Registrar	MBBS,FCPS
9	Dr. Tanweer Akhtar	Senior Registrar	MBBS,FCPS
10	Dr. Lachhmi	Senior Lecturer	MBBS,DGO
11	Dr. Rukhsana Shaikh	Lecturer	MBBS

DEPARTMENT OF PAEDS SURGERY

S.No	Name of Doctor	Designation	Qualification
1	Dr. Sikandar Ali Mughal	Professor	MBBS.FCPS
2	Dr. Abdul Salam Kalhoro	Associate Professor	MBBS,FCPS
3	Dr. Sirajuddin Soomro	Assistant Professor	MBBS,FCPS

DEPARTMENT OF OPHTHALMOLOGY

S.No	Name of Doctor	Designation	Qualification
1	Dr. Syed Imtiaz Ali Shah	Professor	MBBS,FCPS
3	Dr. Shahid Jamal Siddiqui	Professor	MBBS,FCPS
2	Dr. Partab Rai	Professor	MBBS,FCPS
4	Dr. Darikta Dargahi Shaikh	Assistant Professor	MBBS,FCPS
5	Dr. Shabeer Ahmed Bhutto	Assistant Professor	MBBS,ICO,FCPS
6	Dr. Muhammad Amin Shaikh	Assistant Professor	MBBS, DOMS,MS,MS
7	Dr. Abdul Waheed Memon	Senior Lecturer	MBBS,DOMS
8	Dr. Noor Ahmed Shaikh	Senior Lecturer	MBBS,DOMS
9	Dr. Naeem Akhtar Katpar	Senior Lecturer	MBBS,DOMS
10	Dr. Abdul Razak Shaikh	Senior Lecturer	MBBS,DOMS

DEPARTMENT OF ORTHOPAEDICS

S.No	Name of Doctor	Designation	Qualification
1	Dr. Asadullah Mahar	Professor	MBBS,FCPS
2	Dr. Jagdesh Kumar	Professor	MBBS, MS
3	Dr. Abdul Malik Shaikh	Associate Professor	MBBS,FCPS
4	Dr. Zamir Ahmed Soomro	Assistant Professor	MBBS,FCPS
5	Dr. Kashif Iqbal Tebani	Assistant Professor	MBBS,FCPS
6	Dr. Wajid Ali Jokhio	Assistant Professor	MBBS,MS
7	Dr. Mushtaque Ahmed Shaikh	Lecturer	MBBS,FCPS

DEPARTMENT OF PAEDS MEDICINE

S.No	Name of Doctor	Designation	Qualification
1	Prof. Saifullah Jamro	Professor	MBBS,DCH,MCPS,FCPS
2	Prof. Khursheed Ahmed Abbasi	Professor	MBBS,DCH,MCPS, Ph.D
3	Prof. Abdul Hameed Shaikh	Professor	MBBS, FCPS
4	Dr. Arbab Ali Junejo	Associate Professor	MBBS,FCPS
5	Dr. Shanti Lal	Assistant Professor	MBBS,FCPS
6	Dr. Shankar Lal	Assistant Professor	MBBS, DCH, FCPS
7	Dr. Dilshad Ali Shaikh	Senior Lecturer	MBBS,DCH,
8	Dr. Amanullah Shaikh	Senior Lecturer	MBBS,DCH (P.G)
9	Dr. Muhammad Anwar Shaikh	Senior Lecturer	MBBS,DCH (P.G)

DEPARTMENT OF CARDIOLOGY

S.No	Name of Doctor	Designation	Qualification
1	Prof. Dr. Bashir Ahmed Shaikh	Professor	MBBS, FCPS
2	Dr. Agha Riaz Pathan	Assistant Professor	
3	Dr. Muhammad Mujtaba Shaikh	Senior Registrar	MBBS, DIP CARD
4	Dr. Muhammad Khalilullah Shaikh	Senior Lecturer	MBBS, DIP CARD
5	Dr. Saeed Ahmed Shaikh	Senior Lecturer	MBBS, DIP CARD

DEPARTMENT OF E.N.T

S.No	Name of Doctor	Designation	Qualification
1	Dr. Gulzar Ahmed Shaikh	Professor	MBBS, DLO, FCPS
2	Dr. Abdul Rasheed Shaikh	Senior Lecturer	MBBS, DLO
3	Dr. Liaquat Ali Shaikh	Senior Lecturer	MBBS, DLO
4	Dr. Atta Muhammad Siddiqui	Senior Lecturer	MBBS, DLO

DEPARTMENT OF UROLOGY

S.No	Name of Doctor	Designation	Qualification
1	Dr. Malik Hussain Jalbani	Professor	MBBS, FCPS
2	Dr. Abdul Rasheed Shaikh	Professor	MBBS, MS
3	Dr. Amanullah Kalhoro	Associate Professor	MBBS, FCPS
4	Dr. Nisar Ahmed Shaikh	Assistant Professor	MBBS, MS
5	Dr. Muhammad Iqbal Soomro	Assistant Professor	MBBS, DPH
6	Dr. Fouzia Chandio	Senior Registrar	MBBS, FCPS

DEPARTMENT OF RADIOLOGY

S.No	Name of Doctor	Designation	Qualification
1	Dr. Abdul Haleem Shaikh	Professor	MBBS, DMRD
2	Dr. Farooque Ahmed Shaikh	Associate Professor	MBBS, MCPS, DMRD
3	Dr. Mukhtiar Ahmed Abro	Assistant Professor	MBBS, DMRD
4	Dr. Akhtar Hussain Phull	Senior Registrar	MBBS, MCPS, DMRD
5	Dr. Aurangzeb Siyal	Senior Registrar	MBBS, DMRD

DEPARTMENT OF ANESTHESIOLOGY

S.No	Name of Doctor	Designation	Qualification
1	Dr. Ahmed Din Soomro	Assistant Professor	MBBS,FCPS
2	Dr. Abdul Fatah Shaikh	Senior Lecturer	MBBS,MCPS
3	Dr. Menghraj	Lecturer	MBBS
4	Dr. Aijaz Ali Shaikh	Lecturer	MBBS

DEPARTMENT OF DERMATOLOGY

S.No	Name of Doctor	Designation	Qualification
1	Dr. Abdul Manan Bhutto	Professor	MBBS,Ph.D
2	Dr. Dileep Kumar Ahuja	Senior Lecturer	MBBS, D.DERM
3	Dr. Muzaffar Hussain Shaikh	Senior Lecturer	MBBS,DMP
4	Dr. Aijaz Ahmed Solangi	Senior Lecturer	MBBS,D.DERM
5	Dr. Mumtaz Ali Khoso	Lecturer	MBBS

DEPARTMENT OF PULMONOLOGY

S.No	Name of Doctor	Designation	Qualification
1	Dr. Riaz Hussain Shah	Professor	MBBS,FCPS
2	Dr. Manzoor Ali Phulpoto	Assistant Professor	MBBS,DTCD,FCPS
3	Dr. Munawar Ali Shaikh	Assistant Professor	MBBS,DTCD

DEPARTMENT OF PSYCHIATRY

S.No	Name of Doctor	Designation	Qualification
1	Dr. Badaruddin Junejo	Associate Professor	MBBS,DPM,CPS,
2	Dr. Rahmat Ali Wagan	Assistant Professor	MBBS,FCPS

DEPARTMENT OF NEUROLOGY

S.No	Name of Doctor	Designation	Qualification
1	Dr. Alam Ibrahim Siddiqui	Professor	MBBS,FCPS
2	Dr. Raheel Ahmed Channa	Assistant Professor	MBBS,FCPS

DEPARTMENT OF NEUROSURGERY

S.No	Name of Doctor	Designation	Qualification
1	Dr. Ali Akbar Bhand	Professor	MBBS,FCPS
3	Dr. Muhammad Aslam Shaikh	Assistant Professor	MBBS,FCPS

GHULAM MUHAMMAD MAHAR MEDICAL COLLEGE, SUKKUR

BASIC SIDE FACULTY

DEPARTMENT OF ANATOMY

S.No	Name of Doctor	Designation	Qualification
1	Dr. Farooque Ahmed Mughal	Assistant Professor	MBBS, MS Surgery
2	Dr. Abdullah Khiliji	Assistant Professor	MBBS, M.Phil
3	Dr. Mohammad Usman Danwar	Lecturer	MBBS
4	Dr. Shagufta Shah	Lecturer	MBBS
5	Dr. Nadeemuddin Shaikh	Lecturer	MBBS
6	Dr. Khursheed Bano	Lecturer	MBBS
7	Dr. Pardeep Kumar	Lecturer	MBBS
8	Dr. Saif Faizan Ali	Lecturer	MBBS
9	Dr. Imran Laghari	Lecturer	MBBS

DEPARTMENT OF PHYSIOLOGY

S.No	Name of Doctor	Designation	Qualification
1	Dr. Amar Lal	Professor	MBBS, M. Phil
2	Dr. Akhtar Hussain Samo	Assistant Professor	MBBS, FCPS
3	Dr. Aijaz Ali Pathan	Senior Lecturer	MBBS
4	Dr. Muhammad Abdullah Mirani	Lecturer	MBBS
5	Dr. Ayaz Hussain Shah	Lecturer	MBBS
6	Dr. Muhammad Irfan Shaikh	Lecturer	MBBS
7	Dr. Muzaffar Ahmed Kalhoro	Lecturer	MBBS

DEPARTMENT OF PHARMACOLOGY

S.No	Name of Doctor	Designation	Qualification
1	Dr. Nazeer Ahmed Shah	Professor	MBBS, M.Phil
2	Dr. Ashique Hussain Channa	Senior Lecture	MBBS
3	Dr. Allah Jeewayo Panhyar	Lecturer	MBBS
4	Dr. Ajeet Kumar	Lecturer	MBBS

DEPARTMENT OF BIOCHEMISTRY

S.No	Name of Doctor	Designation	Qualification
1	Mr. Arshad Hussain Leghari	Assistant Professor	M.Phil
2	Dr. Ali Akbar Naich	Lecturer	MBBS
3	Dr. Ashfaque Ahmed Jumani	Lecturer	MBBS
4	Dr. Abdul Hakim Faisal	Lecturer	MBBS
5	Dr. Rehana Siddiqui	Lecturer	MBBS

DEPARTMENT OF PATHOLOGY

S.No	Name of Doctor	Designation	Qualification
1	Dr. Haresh Chand	Professor	MBBS, M. Phil
2	Dr. Aftab Ahmed Soomro	Associate Professor	MBBS, M. Phil
3	Dr. Javed Ahmed Badvi	Associate Professor	MBBS, MSc, M. Phil
4	Dr. Khaild Ahmed Qureshi	Assistant Professor	MBBS, M. Phil
5	Dr. Afsar Hussain Shah	Lecturer	MBBS
6	Dr. Khadim Ali Mangi	Lecturer	MBBS
7	Dr. Hidayatullah Memon	Lecturer	MBBS
8	Dr. Amanullah Bhutto	Lecturer	MBBS
9	Dr. Rukhsana Saboor	Lecturer	MBBS
10	Dr. Pawan Kumar	Lecturer	MBBS
11	Dr. Fiza Sharaf Siddiqui	Lecturer	MBBS

DEPARTMENT OF COMMUNITY MEDICINE

S.No	Name of Doctor	Designation	Qualification
1	Dr. Aijaz Hussain Memon	Associate Professor (Current Charge Basis)	MBBS, MPH
2	Dr. Ashfaque Hussain Shah	Senior Lecture	MBBS, MPH
3	Dr. Ghulam Rasool Ghumro	Senior Lecturer	MBBS, DCH
4	Dr. Zahida Kausar	Lecturer	MBBS
5	Dr. Azharuddin Shaikh	Lecturer	MBBS

DEPARTMENT OF FORENSIC MEDICINE

S.No	Name of Doctor	Designation	Qualification
1	Dr. Abdul Rasheed Pathan	Associate Professor	MBBS, DMJ
2	Dr. Abdul Haque Shaikh	Lecturer	MBBS
3	Dr. S.Jalees Fatima	Lecturer	MBBS
4	Dr. Zameer Hussain	Lecturer	MBBS

CLINICAL SIDE

DEPARTMENT OF MEDICINE

S.No	Name of Doctor	Designation	Qualification
1	Dr. Abrar Shaikh	Professor	MBBS, MRCP
2	Dr. Altaf Ahmed Shaikh	Professor	MBBS, MCPS, FCPS
3	Dr. Saleh Muhammad Channa	Associate Professor	MBBS, MCPS, FCPS
4	Dr. Javed Akhtar Samo	Senior Registrar	MBBS, MD
5	Dr. Syed Iftikhar Ali Shah	Senior Registrar	MBBS, FCPS
6	Dr. Pirbho Mal	Senior Lecturer/allow to work AP	MBBS, FCPS

DEPARTMENT OF SURGERY

S.No	Name of Doctor	Designation	Qualification
1	Dr. Jan Muhammad Memon	Professor	MBBS, MS, PhD
2	Dr. Ghulam Hyder Rind	Professor	MBBS, FCPS
3	Dr. Muhammad Rafique Memon	Associate Professor	MBBS, FCPS
4	Dr. Imamuddin Baloch	Associate Professor	MBBS, MS
5	Dr. Shahid Hussain Mirani	Associate Professor	MBBS, MS
6	Dr. Azhar Ali Shah	Senior Registrar	MBBS, FCPS
7	Dr. Dharmoo Mal	Lecturer	MBBS, FCPS

DEPARTMENT OF PAEDS MEDICINE

S.No	Name of Doctor	Designation	Qualification
1	Dr. Bahawalain Jamro	Associate Professor	MBBS, FCPS
2	Dr. Ghulam Rasool Bouk	Assistant Professor	MBBS, MCPS, FCPS
3	Dr. Hidayatullah Memon	Lecturer	MBBS
4	Dr. Saira Bano	Lecturer	MBBS

DEPARTMENT OF GYNAECOLOGY & OBSTETRICS

S.No	Name of Doctor	Designation	Qualification
1	Dr. Kalsoom Begum Bhatti	Assistant Professor	MBBS, FCPS
2	Dr. Shoaibunisa Soomro	Assistant Professor	MBBS, FCPS
3	Dr. Tahmina Mahar	Assistant Professor	MBBS, FCPS
4	Dr. Rubina	WMO/ allow to work AP	MBBS

DEPARTMENT OF OPHTHALMOLOGY

S.No	Name of Doctor	Designation	Qualification
1	Dr. Muhammad Afzal Pehchuho	Associate Professor	MBBS, DOMS, FCPS
2	Dr. Abdul Haleem	Senior Registrar	MBBS, FCPS
3	Dr. Muhammad Muqeem Soomro	Chief Ophthalmologist	MBBS, DOMS

DEPARTMENT OF ORTHOPAEDIC SURGERY

S.No	Name of Doctor	Designation	Qualification
1	Dr. Zulfiqar Ali Soomro	Associate Professor (contract basis)	MBBS, FCPS
2	Dr. Shakeel Ahmed Abbasi	Assistant Professor	MBBS, MS
3	Dr. Mujeeb Rehman Pathan	Lecturer	MBBS

DEPARTMENT OF UROLOGY

S.No	Name of Doctor	Designation	Qualification
1	Dr. Tufail Ahmed Pechuho	Associate Professor	MBBS, MS
2	Dr. Abdul Saboor Soomro	Assistant Professor	MBBS, MS

DEPARTMENT OF E.N.T

S.No	Name of Doctor	Designation	Qualification
1	Dr.Pir Bux Magsi	Associate Professor	MBBS,DLO,FCPS
2	Dr. Hamid Ali Sangi	Assistant Professor	MBBS,FCPS

DEPARTMENT OF CARDIOLOGY

S.No	Name of Doctor	Designation	Qualification
1	Dr. Raj Kumar Sachdewani	Assistant Professor	MBBS, Dip Card, MD
2	Dr. Kheraj Matani	Senior Registrar/AP	MBBS,FCPS
3	Dr. Vengus	Lecturer	MBBS

DEPARTMENT OF PULMONOLOGY

S.No	Name of Doctor	Designation	Qualification
1	Dr. Shafi Muhammad Khuhawar	Assistant Professor	MBBS, FCPS
2	Dr. Mazharuddin Junejo	Senior Lecturer	MBBS, FCPS

DEPARTMENT OF RADIOLOGY

S.No	Name of Doctor	Designation	Qualification
1	Dr. Mohammad Ali Shaikh	Radiologist	MBBS, MCPS

DEPARTMENT OF DERMATOLOGY

S.No	Name of Doctor	Designation	Qualification
1	Dr. Irfan Ahmed Shaikh	Assistant Professor	MBBS, FCPS

DEPARTMENT OF NEUROLOGY

S.No	Name of Doctor	Designation	Qualification
1	Dr. Lal Chand	Assistant Professor	MBBS, FCPS

DEPARTMENT OF ANAESTHESIOLOGY

S.No	Name of Doctor	Designation	Qualification
1	Dr. Israr Ahmed Shaikh	Lecturer	MBBS

BIBI ASEEFA DENTAL COLLEGE, LARKANA

The Faculty of Dentistry

S.No	Name of Doctor	Designation	Qualification
1	Prof. Noor Ahmed Khoso	Professor	BDS,MS
2	Prof. Zafar Ali Pirzado	Professor	M.Phil,Ph.d
3	Dr. Muhammad Ilyas Shaikh	Assistant Professor	BDS, FCPS
4	Dr. Qaimuddin Shaikh	Assistant Professor	BDS, MDS
5	Dr. Safia Khatoon	Assistant Professor	BDS, FCPS
6	Dr. Yousif Ali Shah	Assistant Professor	BDS, MDSc
7	Dr. Waheed Gul Shakh	Assistant Professor	BDS, FCPS
8	Dr. Shumaila Shaikh	Assistant Professor	BDS, MSc
9	Dr. Qudoos-ur-Rehman Soomro	Assistant Professor	BDS, MSc.
10	Dr. Imran Samejo	Assistant Professor	BDS, FCPS
11	Dr. Abdul Bari Memon	Assitant Professor	BDS,FCPS
12	Dr. Saleem Raza Khuhawar	Assistant Professor	BDS,MS
13	Dr. Zaheer Ahmed Soomro	Lecturer	BDS
14	Dr. Shabir Ahmed	Lecturer	BDS
15	Dr. Rashid Iqbal Bughio	Lecturer	BDS
16	Dr. Shahid Ali Mirani	Lecturer	BDS
17	Dr. Jamshed Ahmed Abro	Lecturer	BDS
18	Dr. Maria Saba	Lecturer	BDS
19	Dr. Farzana Mangi	Lecturer	BDS
20	Dr. Lutuf Ali	Lecturer	BDS
21	Dr. Ghulam Muhiddin Shah	Lecturer	BDS
22	Dr. Asma Bano	Lecturer	BDS
23	Dr. Rajesh Kumar	Lecturer	BDS
24	Dr. Seema Hameed	Lecturer	BDS
25	Dr. Reeta Khatri	Lecturer	BDS
26	Dr. Shakeel Ahmed Shaikh	Lecturer	BDS
27	Dr. Rajesh Mandhan	Lecturer	BDS
28	Dr. Shazia Shakeel	Lecturer	BDS
29	Dr. Muhammad Amin Sahito	Lecturer	BDS
30	Dr. Sundeep Kumar	Lecturer	BDS
31	Dr. Mehak Irshad	Lecturer	BDS
32	Dr. Almas Rahujo	Lecturer	BDS
33	Dr. Ali Muhammad Rahujo	Lecturer	BDS

SHAHEED MOHTARMA BENAZIR BHUTTO MEDICAL UNIVERSITY LARKANA EXAMINATION) REGULATIONS: 2015-16.

3. INTEGRATED TEACHING & INTRODUCTION OF ANNUAL SYSTEM, COURSES OF STUDIES, EXAMINATIONS & MEDIUM OF INSTRUCTIONS

3.1 GENERAL CLAUSES

1. Shaheed Mohtarma Benazir Bhutto Medical University Larkana shall hold all examinations with one supplementary examination of each professional examination.

Examinations shall start with a minimum gap of two weeks after completion of course.

2. Examination Calendar shall be prepared by the Controller of Examinations in consultation with concerned Dean of Faculty for the subject and with the approval of Vice Chancellor.
3. Controller of Examination shall prepare and notify the Date Sheet for written and practical examination. Date sheet once notified, shall not be changed however the Vice Chancellor, under exceptional circumstances (to be recorded in Writing), may recommend a change in the date sheet.
4. The Chairman concerned must certify that the candidate has actually attended 75% of the lectures delivered and practical/clinical sessions conducted during the academic year in each of the subject taught.
5. The candidate shall be required to submit their Admission Forms on or before the date notified for the purpose along with prescribed regular fee and with the double the normal fee till seven days before the commencement of the examination. The Examination Department shall not entertain the incomplete examination forms.

6. Examination fee once deposited shall not be refundable.
7. Admit Card and Roll Number Slip, shall bear the stamp of the Controller of Examinations.

3.2 FORMAT OF THEORY EXAMS

1. Annual shall be system of Examination for all professional undergraduate MBBS/BDS examinations.
2. Theory and practical shall have 50% each of total marks and theory shall be BCQs & SEQs type.
3. The Theory papers shall be made from Q. bank. As the Q. bank of SMBB Medical University Larkana is insufficient. Therefore, in addition to Q. bank questions will be invited from different examiners.
4. BCQs portion contains 70% Marks including 2 BCQs of tagged subject per 35 BCQs. Each BCQ will be of 3 marks with 01 minute time allocation. 30 % of mark SEQs (6 Questions each carry 6.5 marks including 1 Question of tag subject).
5. The minimum eligibility requirement for the appointment as Paper Setter for Examination is that the person should be at least a senior lecturer with a minimum of three years standing in that position in a Medical College/University. Two senior most faculty members will be conveners one from CMC Larkana and one from GMMMC Sukkur. They will prepare two sets of papers (One for annual and other for supplementary examination). The Convener shall submit each paper in duplicate, on prescribed stationary (one office copy and other press copy) simultaneously to the Controller of Examinations at least two weeks before the commencement of examinations.

3.3 OSPE / OSCE EXAMINATIONS

1. In basic subjects (Anatomy, Physiology, Biochemistry, Pharmacology, Forensic Medicine, Pathology and Community Medicine) following shall be distribution of marks in practical/Viva Voce.

- Viva voce/ Interactive OSPE 45%
 - Practical 15%
 - OSPE (Static) 30%
(10 stations each station carry 3 marks)
 - Internal evaluation 10%
(5% attendance, 5% departmental tests).
2. In clinical subjects (E.N.T, Eye, Medicine, Surgery, Gynae/Obs, Paediatrics) the distribution of marks shall be as below:
- Log book 15%
 - Long Case 25%
 - Short Case 20%
(2 Short case 10% + 10%)
 - OSCE (Static on Multimedia) 30%
(10 stations each station carry 3 marks)
 - Internal Evaluation 10%
(5% attendance, 5% departmental/ ward tests).
 - OSPE / OSCE (Static) will be conducted on Multimedia at same time in all constituent / affiliated Medical Colleges.
 - Each examiner has to submit their individual results in sealed envelope to the convener of examination separately and he/she will submit the same to Controller examination department on same day.
 - Internal evaluation marks shall be awarded by conveners of the Examination and sent to Controller Examination one week before commencing theory examination.
 - Final result of practical will be compiled and awarded by conveners.
 - There should be meeting one day before, the Invigilation members & supporting staff with Controller of Examinations for proper & smooth conduction of the Examination.
- ii. One Senior Professor of the University to be appointed by the Vice Chancellor,
- iii. One Principal of an affiliated college to be appointed by the Vice Chancellor,
- iv. The Controller of Examinations
- b. Functions**
1. The Functions of the Examinations Discipline Committee shall be:
 - i. To deal with and scrutinize the cases of the alleged use of unfair means by the candidates appearing at any university examination,
 - ii. To deal with all other matters affecting the discipline of the candidates at University Examination
 - iii. To award punishment, subject to the approval of the Vice Chancellor, to candidates who adopt malpractice and create in-discipline at the Examination,
 - 2- The committee may call a candidate alleged of unfair means at the examination for hearing him/her in person before any decision is taken,
 - 3- A candidate aggrieved by the decision of the Examination Discipline Committee may appeal to the Syndicate against the decision of the committee within thirty days from the date of receipt of the decision of the committee. The decision of the Syndicate shall be final, and shall not be called in question in any court of law.
 - 4- The members of the Examination Discipline Committee other than Ex-officio members shall hold office for two years.
 - 5- The quorum for a meeting of the Examinations Discipline Committee shall be three members.

3.4 DISCIPLINE IN EXAMINATIONS

Following rules shall govern the discipline in examinations:

a. Constitution of Examination Discipline Committee

There shall be an Examination Discipline Committee, which shall consist of:

- i. One Dean to be appointed as chairman by the Syndicate.



3.5 Notice and Ex-parte Decision

Notice of hearing shall be given to the candidate on postal address of the candidate; and if by the given date and time the candidate does not appear before the committee, the controller of Examinations shall repeat second notice to the accused candidate by giving him / her fresh date and time to present himself/herself before the Discipline Committee, else ex-parte decision will be taken against him/her. The notice will be sent by registered post on the address given by the candidate.

3.6 Decision of the Examination Discipline Committee

The Examination Discipline Committee after taking into consideration the evidence on record, and the explanation and evidence given by the candidate, will give their decision in writing and a copy of a decision will be supplied to the candidate.

3.7 Appeal

If a candidate has valid reason to appeal against the decision of the Examination Discipline Committee, he/she may do so within one month from the date of receipt of the decision, addressed to the Vice Chancellor, who may refer the appeal to the Syndicate.

3.8 Representation by any legal Advisor

No Lawyer or any Legal Advisor shall be allowed to appear on behalf of or assist an accused candidate during inquiry or appeal under these Regulations. Only the candidate shall be heard in person.

3.9 Powers of Vice Chancellor to award punishment in cases of disturbances in Examination:

Notwithstanding anything to the contrary in these Regulations, the Vice Chancellor shall have the powers to summarily award suitable punishment without reference to the Examination Discipline Committee, to any candidate or to any student on the rolls of constituent institution or to any person who creates disturbances of any kind during the examination or otherwise misbehaves in or around any examination hall or becomes arrogant or insolent with the Investigation Staff or Inspectors or the University Authorities.

3.10 Behavior of the candidate in the Examination Hall and around the Examination Centre

Any candidate who refuses to obey the Head Invigilator or changes his/her seat with another candidate or creates disturbance of any kind during a particular paper of an examination or otherwise misbehaves in or around the Examination Hall may be expelled by the Head Invigilator and may be disallowed from appearing in the particular paper of the examination. He/she may however, be allowed to take the remaining papers of the examination if the Head Invigilator is satisfied that he/she would behave appropriately in the remaining papers.

In addition, if he/she threatens to commit or commits breach of peace and law he/she may be prosecuted under relevant law in force and may be handed over to the police, if it is a cognizable offence.

The Head Invigilator may inform to the Controller of Examinations without delay, every such case in detail and Controller Examinations shall take steps to inform the Vice Chancellor of these cases for necessary action.

3.11 Possession of unauthorized material

If a candidate is found having in his/her possession papers, books or any other material, which might possibly be of assistance to him shall be deemed to have used unfair means.

3.12 Unfair Means and Copying etc

Subject to the generality of the word as defined, unfair means shall also include the following: -

- I. Removing the leaf from his/her answer book.
- II. Using abusive or offensive language in his/her answer book.
- III. Making an appeal to the examiner in his/her answer book.
- IV. Making false representation in his/her application form or any document produced by him/her.
- V. Forging another person's signature on his/her examination form, or any other document.
- VI. Refusing to obey instructions issued to him/her by the university in connection with an examination.
- VII. Refusing to obey Head Invigilator or any other

staff member or person deputed for the purpose in the Examination Hall.

- VIII. Disclosing his/her identity or making peculiar marks in his/her answer book(s) for examination whether or not any fictitious roll numbers are used by the University.
- IX. Giving or receiving assistance or allowing any other candidate to copy his/her answer book.
- X. Communicating or attempting to communicate with object of influencing them in the award of marks.
- XI. Creating disturbance of any kind during the examination or otherwise misbehaving in or around the Examination Hall.
- XII. Copying from any paper book or note or by any other means.
- XIII. Making previous arrangement to cheat in the examination such as smuggling in or out a question paper or an answer book in whole or leaves thereof impersonation or misconduct of a serious nature.
- XIV. Attempting to induce, directly or indirectly any official of the university or any person engaged in connection with an examination to give any kind of undue assistance to him/her including disclosure of guarded information.
- XV. Misbehaving or creating any kind of disturbance in or around any examination Centre including staging of or inciting for a walkout.
- XVI. Taking the whole or a part of any answer book or a supplement into or out of an Examination Centre.
- XVII. Substituting the whole or a part of an answer book or a continuation/supplement sheet with an answer book or continuation/supplement sheet not duly issued to him/her for the examination.
- XVIII. Forging, mutilating, altering, erasing or otherwise tampering with any document connected with an examination or making undue use of such document or abetting in the commission of such offences.
- XIX. Abetting or attempting to use these or any other unfair means, eg: using any form of multimedia, electronic devices like mobiles, mini PC, laptops, Tablets & Internet

3.13 CHANGE OF CENTRE

There shall be no change of Centre.



4. ADMISSION POLICY

4.1 TAGGED DISTRICTS FOR SUBMISSION OF APPLICATION FORMS FOR ADMISSION TO:

4.2 MBBS COURSE

S. No.	Institutions	Tagged Districts
01	Chandka Medical College, Larkana.	Larkana, Dadu, Shikarpur, Kamber/Shahdadkot, Kashmore, Jacobabad and Naushahro Feroze
02	Ghulam Muhammad Mahar Medical College, Sukkur.	Sukkur, Khairpur and Ghotki

4.3 BDS COURSE

S. No.	Institution	Tagged Districts
01	Bibi Aseefa Dental College Larkana	Larkana, Dadu, Shikarpur, Kamber/Shahdadkot, Kashmore, Jacobabad and NaushahroFeroze, Sukkur, Khairpur and Ghotki



5. ALLOCATION OF SEATS

DISTRICT WISE ALLOCATION OF SEATS FOR MBBS & BDS

5.1 MBBS & BDS GENERAL MERIT AND UEAP SEATS

Following is district-wise distribution of General Merit and reciprocal UEAP seats of MBBS & BDS courses at constituent Medical colleges of Shaheed Mohtarma Benazir Bhutto Medical University, Larkana.

A. MBBS

(a) CMC (Larkana Selection Center)

S.No.	Name of District	MBBS	
		MERIT	UEAP
		CMC	CMC
1	Larkana	27	07
2	Shikarpur	23	06
3	Jacobabad	19	04
4	Dadu	29	07
5	Kamber-Shahdadkot	24	06
6	Kashmore	17	04
7	Naushahro-Feroze	28	07
	Total	167	41

(b) GMMMC (Sukkur Selection Center)

S.No.	Name of District	MBBS	
		MERIT	UEAP
		GMMC	GMMC
1	Sukkur	23	05
2	Ghotki	25	06
3	Khairpur	40	09
	Total	88	20



c) SEATS AT DOW UNIVERSITY OF HEALTH SCIENCES

Selection on 11 unilateral seats from SMBBMU to Dow University of Health Sciences (DUHS) Karachi shall be made as under

S.No.	Name of Colleges	DUHS
1	CMC, Center	07
2	GMMMC Center	04

(d) SEATS AT SINDH MEDICAL UNIVERSITY, KARACHI.

Selection on 28 unilateral seats from SMBBMU to Sindh Medical University (SMU) Karachi shall be made as under:

S.No.	Name of Colleges	SMU
1	CMC, Center (Larkana Board)	14
2	GMMMC Center (Sukkur Board)	14

(e) SEATS AT FATIMA JINNAH MEDICAL COLLEGE, LAHORE

Selection for 3 seats at the Fatima Jinnah Medical College (FJMC) Lahore, shall be made as under.

S.No.	Name of Colleges	Seats
1	CMC, Center	02
2	GMMMC Center	01

(f) SEATS AT MEDICAL COLLEGE OF AZAD JAMMU & KASHMIR

One candidate shall be selected either by choice from General Waiting pool for admission in MBBS Course at the Medical Colleges of Azad Jammu & Kashmir as per policy of Health Department Government of Sindh.

S.No.	Name of University / Colleges	Seats
1	SMBBMU	01



B. BDS

(a) CMC (Larkana Selection Center)

		BDS		
S.No.	Name of District	Bibi Aseefa Dental College, Larkana		
		MERIT	UEAP	
			Local	Overseas
1	Larkana	05	04 SEATS	01 SEAT
2	Shikarpur	04		
3	Jacobabad	03		
4	Dadu	05		
5	Kamber-Shahdadkot	04		
6	Kashmore	03		
7	Naushahro-Feroze	05		
8	Sukkur	04		
9	Ghotki	05		
10	Khairpur	07		
Total		45	05	



5.2 DISTRICT MERIT SEATS:

202 district merit seats at CMC Larkana & 108 district merit Seats at GMMMC Sukkur after selection shall be admitted according to their option of merit cum choice in various colleges according to the seats allocated in those colleges.

EXPLANATORY NOTE:

The seats on merit cum choice in the college other than the selection centers shall be filled on the basis of order of options given by the candidates keeping in view their merit position.

Example-1:

The candidates of CMC who opt for DUHS as their 1st choice and SMU as 2nd choice and CMC as 3rd choice shall be considered for that college on merit cum choice basis. The top most seven candidates amongst these shall be selected for the DUHS and fourteen candidates shall be selected for SMU from CMC Centre and then 3rd option shall be considered for the remaining candidates and so on.

Example-2:

If a candidate selects the following options.

1-CMC 2-DUHS 3-SMU

He/She shall be considered for CMC only. Suppose the last candidate selected to DUHS/SMU has lower merit score even then the candidate with higher score shall not be considered for DUHS or SMU, as his/her 1st option is CMC.

5.4 SEATS AT DUHS KARACHI.

07 seats from CMC, Larkana & 04 seats from GMMMC, Sukkur shall be admitted to DUHS Karachi on merit cum choice basis. The candidates who have not given their option shall not be considered for these seats. These seats are allocated in addition to the general merit seats of each center. The adjustment for admission in both Medical Institutions of SMBBMU shall be made by top most waiting candidates from respective districts as per merit, so as to keep the allocated quota merit of each district intact.

5.5 SEATS AT SMU KARACHI.

There are 14 seats on merit cum choice for tagged districts of CMC, Larkana who have passed HSC-II examination from Larkana Board & 14 seats on merit cum choice for tagged districts of GMMMC, Sukkur who have passed HSC-II examination from Sukkur Board shall be admitted to SMU Karachi as per notification of Govt. of Sindh. The candidates who have not given their option shall not be considered for these seats. These seats are allocated in addition to the general merit seats. The adjustment for admission in both Medical Colleges of SMBB Medical University Larkana shall be made by top most waiting candidates from respective districts as per merit, so as to keep the allocated quota merit of each district intact.

5.6 SEATS AT FJMC, LAHORE:

Two girls from CMC, Larkana & one girl from GMMMC, Sukkur shall be selected according to their merit cum choice basis in the respective selection center for admission at FJMC, Lahore from the candidates already selected on district merit quota.

The selection centers shall make the selection for nomination for reserved seats in Fatima Jinnah Medical College, Lahore on the basis of merit cum choice basis. The candidates, who have not given the option, will not be considered for these seats. These seats are allocated in addition to the general merit seats of each center. The adjustment for admission in both Medical Colleges of SMBB Medical University Larkana shall be made by top most waiting candidates from respective districts as per merit, so as to keep the allocated quota merit of each district intact.

5.7 ONE SEAT AT AZAD JAMMU & KASHMIR:

Selection for one seat from both Medical Colleges of SMBB Medical University Larkana for Azad Jammu & Kashmir Medical College on merit cum choice which shall be filled from pool waiting merit.

5.8 OPTION (MBBS & BDS) ONCE GIVEN SHALL BE FINAL:

1st	2nd
<input type="text"/>	<input type="text"/>

Option means MBBS and BDS. Any candidate who opts

MBBS only He/She will not be given admission in BDS and vice versa.

5.9 CHOICE FOR MBBS AT DIFFERENT MEDICAL INSTITUTIONS, ONCE GIVEN SHALL BE FINAL.

Once a candidate gives choice for a seat on merit cum choice basis, the college other than the parent college and fails to avail the same, his/her admission shall stand cancelled & will not be given even if any / some seat(s) fall vacant.

5.10 UEAP SEATS

41 candidates on University Education Assistance Programme (UEAP) at CMC, Larkana & 20 candidates at GMMMC Sukkur shall be selected from the list of candidates who apply for UEAP. The selection shall be made according to the district quota.

5.12 BDS Seats.

A total No. of 50 candidates will be selected on merit for admission to 1st year BDS at Bibi Aseefa Dental College according to the allocation, 45 seats are district merit, 05 seats are UEAP (04 seats are Local & 01 seat is Overseas Pakistani's).

a. District merit Seats

The candidates on district merit seats shall be selected on merit cum choice basis. If candidate has not given option within district merit seats allocated for MBBS, then he shall not be eligible for BDS admission and vice versa.

b. Once a candidate gets admission in BDS he/she will not be considered to change his admission from BDS to MBBS, even if later on any seat becomes vacant in the respective district.

c. University Education Assistance Program (UEAP) Amongst of 05 seats BDS on UEAP program which will be filled on merit 04 seats by the local candidates and 01 seats for Overseas Candidates who apply for this program. Once admitted in BDS course will not be given admission for MBBS course if any seat becomes vacant in that district on UEAP.

If overseas seat remains vacant then this shall be filled through advertisement from all districts of SMBBMU on merit basis.



6. OVERALL DISTRIBUTION OF MBBS SEATS AT CMC & GMMMC.

6.1	District merit	CMC	GMMC	TOTAL
A	CMC Center candidates of Larkana, Dadu, Shikarpur, Kamber-shahdadt, Jacobabad, Kashmore and Naushahro Feroze	167	--	167
B	GMMMC Center candidates of Sukkur, Ghotki and Khairpur.	8	80	88
	TOTAL DISTRICT MERIT SEATS OF EACH CENTER	175	80	255

6.2	UEAP			
(a)	i. Local Students	41	20	61
(b)	ii. Foreign Nationals	08	--	08
(c)	iii. Overseas Pakistani	03	--	03
(d)	iv. Mauritian	02	--	02
	Sub Total	54	20	74
	TOTAL	229	100	329

6.3	RESERVED			
(a)	AJK	10	--	10
(b)	NA/FATA	05	--	05
(c)	Mauritius	02	--	02
(d)	Bangladesh	01	--	01
(e)	IHK	01	--	01
(f)	Afghan Refugees	01	--	01
(g)	Disabled persons	01	--	01
	Sub Total	21	--	21
	Grand Total	250	100	350

7. MBBS SEATS OF VARIOUS CATEGORIES

7.1 Reserved seats for children of Overseas Pakistanis

The children whose parents work out of Pakistan can be divided into two groups:

- Candidates living abroad and having education outside Pakistan. (Need not to appear in Entry Test) they have to submit certificate of SAT-II and TOFEL or IELTS with minimum of score 500 or 5.5 respectively.
- Candidates living in Pakistan & having education in Pakistan (Need to appear in Entry Test).
- The relatives / friends sponsorship is not allowed. Nomination is made by the embassy / consulate of the concerned country where parents are serving.

Note: If these seats fall vacant, will be advertised and filled on merit basis amongst all tagged districts of University.

7.2 Reserved Seats for Mauritius, Bangladesh, IHK & Afghan Refugees

- Three reserved seats are sanctioned on the directives of President of Pakistan, to be filled as per foot note shown below. one for the Bangladesh & two for Mauritius.
- One reserved seat for candidates of Indian Held Kashmir
- One reserved seat for candidates of Afghan Refugees.

Note: Seats of category a, b & c are to be filled through nomination by Economic Affairs Division, Islamabad / Inter Provincial Co-ordination (IPC) Islamabad.

If nominations of nationals of countries for which the seats are reserved are not received within 90 days of the admission process, the seats shall be considered vacant and filled by advertisement on merit basis amongst all tagged district of university by making fees and other charges in US\$ equivalent to foreign nationals/overseas Pakistani category.

7.3 UEAP Seats for Foreign Nationals

- Ten University Education Assistance Programme (UEAP) seats for Foreign Nationals including two seats for Mauritius.

Note: Nominations are received from Higher Education Commission Government of Pakistan, Islamabad. If no nominations are received within 90 days of admission process then these seats shall be considered vacant and filled by advertisement on merit basis amongst all tagged districts of University, by making payment of fees and other charges in US\$.

Candidates applying for Admission on the seats reserved for Foreign Nationals & Overseas Pakistanis shall produce a Certificate of A level with B grade as per equivalence from IBCC, Islamabad with the science subjects as Chemistry, Biology & Physics / Mathematics.

7.4 Seats reserved for AJK, FATA, NA

Candidates are nominated by respective selection Boards. These candidates are not required to appear in Entry test conducted at SMBBMU Larkana. And they are admitted on nomination received from Government of Azad Jamu & Kashmir / Economic Affairs Division, Islamabad / Inter Board of Provincial Co-ordinator, Islamabad



7.5 ADMISSION OF DISABLED CANDIDATES

Candidates applying on reserved seats for disabled person & having failed to be selected against the district merit seats on the basis of their overall merit after the Entry Test and those who have produced a certificate from the Department of Social Welfare, Government of Sindh, to the effect:

1. That he/she is a disabled candidate. (A disability is defined as that degree of physical disability which puts the candidate at disadvantage as compared to a normal person for acquiring education before entering medical institutions, but otherwise capable of performing his/her duties satisfactorily as medical professional.)
2. That he/she is mentally fit and physically able to carry on studies and perform professional duties after qualifying MBBS.
3. That, his/her disability should not be of such a severe degree that makes a candidate unable to acquire medical education or work as a doctor.

The candidate fulfilling the above criteria shall be considered on the quota.

Selection against the reserved seats will be made from the list of the disabled candidates strictly on combined merit basis of both the centers after the entry test.

7.6 Medical Board for Disabled Candidates

1. A Medical Board as described below shall be constituted by the Vice Chancellor Shaheed Mohtarma Benazir Bhutto Medical University Larkana to examine the candidates and establish the disability of the candidates. The board shall certify the eligibility of the candidate as disabled & award the admission on overall merit according to the quota.
2. If the disable candidate is eligible for admission on merit basis, will not be considered for disable quota.

MEMBERS OF MEDICAL BOARD FOR DISABLED CANDIDATES

Principal of Chandka Medical College Larkana	Member
Principal of GMM Medical College Sukkur	Member
Professor / Chairman of Orthopedics, SMBBMU	Member
Professor / Chairman of Ophthalmology, SMBBMU	Member
Professor / Chairman of E.N.T, SMBBMU	Member
Professor / Chairman of Psychiatry, SMBBMU	Member
Professor / Chairman of Medicine, SMBBMU	Member
Director Admissions SMBBMU	Member

NOTE: SENIOR PRINCIPAL OF MEDICAL COLLEGES SHALL BE CHAIRMAN

8. ELIGIBILITY OF CANDIDATES

8.1 Qualification

The minimum qualification of a candidate for admission in 1st year MBBS /BDS program at SMBBMU'S constituent Medical / Dental College under all admission categories is Higher Secondary Certificate (HSSC) Examinations in Pre-Medical Group i.e. Physics, Chemistry, Biology with at least "B" Grade or any equivalent examination of any other Board / Body recognized by IBCC with at least "B" Grade passed during the year mentioned below.

- | | |
|---------------------------|------|
| a. Annual | 2015 |
| b. Annual / Supplementary | 2014 |

Candidates obtaining less than B grade in HSSC (Pre-Medical) or equivalent Examination are not eligible. The candidates who have passed A-Level Examination should submit transcript and equivalence certificate from IBCC Islamabad.

Address: Secretary IBCC (Inter Board Committee of Chairman) office No: 342, Street No: 97, Sector G-9/4 Islamabad.

As per orders of honourable supreme court of Pakistan contained in CMA/NO 578-K/2014 Dated 30-12-2014 "All those students, who got admissions in the evening classes of Chandka Medical College, but have been rendered without admissions shall be allowed by the competent authority to appear and apply for admissions in the next session on merits and as per rules"

8.2 DOMICILE

Candidates for admission under the categories of General Merit, Reciprocal, Disabled seat and UEAP (Local) must be permanent residents and Domiciled in respective Districts of Sindh tagged to CMC Larkana or GMMMC Sukkur.

8.3 Age Limit

The applicant should be under 25 years of age on the last date of submission of Application Form.

8.4 Eligibility criteria for Overseas Pakistanis /Foreign National candidates with qualification other than that from the Board of Intermediate & Secondary Education in

Pakistan.

- i. Out of three science subjects Biology & Chemistry are essential subjects. The third science subject could be Physics or Mathematics.
- ii. Equivalence certificate of HSSC (Pre-Medical) with minimum 60% marks, from IBCC Islamabad.
- iii. Country secondary school certificate / Marks certificate of Intermediate Examination / A-Level having passed during the year.
- iv. SAT-II Examination with minimum of 550 score, in each subject, i.e. Chemistry, Biology and Physics or Mathematics.
- v. Valid TOEFL or IELTS with a score of 500 or 5.5 respectively by NUML, Islamabad. (For the candidates who have obtained their required qualifications from those institutions where the medium of instruction for their qualifications is not English).
- vi. Passport with valid visa.
- vii. Six passport size photographs of candidate.
- viii. They need not appear in Entry Test.

The above mentioned conditions are essential along with the following requirements for Overseas Pakistani candidates seeking admission at SMBBMU Larkana.

- (a) For candidates having qualification from abroad.
 - i. They need not to appear in Entry Test.
 - ii. The domicile & PRC of the candidate should be from the district tagged to the respective selection centers of the SMBBMU.
 - iii. Nomination by the concerned Embassy/ Consulate.
 - iv. Intermediate or equivalent examination of year and marks.
 - v. Certificate showing place of service of parent abroad.
- (b) For candidates having qualification within Pakistan
 - i. They need to appear in Entry test. ii. The domicile & PRC of the candidate should be from the districts tagged to the respective selection centers of the SMBBMU.

9. ENTRY TEST

- i. Candidates who fulfill the criteria laid down in para 8.1 above (Pre-Medical Group) with B grade shall be eligible to appear in the Entry Test.
- ii. All eligible candidates for admission to MBBS/BDS shall be required to appear in the Entry Test except category at 7.1a, 7.2 & 7.4.
- iii. The Entry Test shall be conducted from the prescribed intermediate syllabus of Board of Intermediate and Secondary Education, Larkana, Hyderabad, Mirpurkhas and Sukkur. There will be 100 multiple choice questions in the test distributed in the following manner.
 - a. Biology 30 Questions
 - b. Physics 30 Questions
 - c. Chemistry 30 Questions
 - d. English 10 Questions

The time allocated to solve the paper will be 100 minutes.

Award of Marks

Each correct answer	=	1 (One) Marks
Each incorrect answer	=	- 0.25 (Quarter) Negative Mark

Self Assessment for Entry Test will be made available at the official website of Shaheed Mohtarma Benazir Bhutto Medical University, Larkana. Website <http://www.smbbmu.edu.pk>

- iv. The candidates shall collect admit card for the Entry Test from TCS Express centers where they submitted their application forms, by submitting the copy of the receipt.



10. RULES OF ADMISSION

- 10.1 The applications for admission to 1st year MBBS/ BDS shall be invited through an advertisement in the leading newspapers mentioning the last date of receiving such applications.
- 10.2 The Prospectus including Application Form can be obtained by paying Rs. 630 from the following TCS Express Centers.
- Name of TCS Centers
- | | | |
|------------------------------|--------------------------|---------------|
| 1. Larkana | 8. Shahdadkot | 14. Mehar |
| 2. Kandhkot | 9. Naushero feroze | 15. Khairpur |
| 3. Kamber | 10. Dadu | 16. Shikarpur |
| 4. Jacobabad | 11. Sukkur | 17. Ghotk |
| 5. Ranipur | 12. Daharki | 18. Pano Aqil |
| 6. Kashmore | 13. Ambar Tower Karachi. | |
| 7. Area office E/C Hyderabad | | |
- 10.3 Every application for admission to CMC, Larkana or GMMMC, Sukkur at the time of submission shall be attached with a non-refundable Entrance Test Fee in the form of Receipt (original worth Rs. 1500/- in the name of Vice Chancellor, Shaheed Mohtarma Benazir Bhutto Medical University, Larkana, to be deposited in the account No. 0259385831000344 of MCB Bank Limited in its any Branch in Sindh (write name, father's name and district on back of the receipt).
- 10.4 Candidates are required to fill up only one form for admission in MBBS and BDS course for all categories of seats (General Merit, merit cum choice & Disabled seats). A separate form is provided for applying on UEAP (Local and Overseas / Foreign Nationals). Candidate must write on the top of the file in bold capital letters for claim of various categories of the seats. Those candidates who apply for disabled category seat they must write on the top of the file in the bold capital letters as DISABLED.
- 10.5 Every application for admission shall be accompanied by one set of photocopies of the following documents duly attested by a government servant in B-18 or above.
- Matriculation certificate or equivalence certificate.
 - Matriculation marks certificate or equivalence mark certificate from IBCC.
 - Intermediate science marks sheet or equivalence certificate by IBCC (Pre-Medical Group) of the year.
 - Computerized National Identify card / B-form of candidate from NADRA.
 - Permanent Residence certificate Form-C of the candidate in accordance with Law/Rules.
 - Domicile certificate of candidate.
 - Domicile certificate of father on P-1 form. The domicile certificate of mother shall only be accepted in case where father has expired OR there has been remarriage/separation or divorce for which a valid document from a judge of the court of law shall be produced.
 - Any candidate found using Domicile/PRC of more than one district/province of Pakistan shall be disqualified for admission.
 - If original PRC/Domicile of candidate and domicile of parent is/are not submitted along with application for admission, the candidate's application shall not be considered for admission. If instead of PRC and Domicile Certificate candidate submit receipt of domicile certificate with application for admission, it shall not be considered as substitute of PRC / Domicile.
 - Computerized national identity card of applicant's father/Guardian, showing same permanent address of the district of domicile in Sindh.
 - Hafiz-e-Quran certificate (if applicable).
 - Certificate of disability (if applicable).
 - Two passport size photographs bearing name and district written on the back (one extra photograph pasted in the space provided on the front of the application form).

- l) In-case the father of applicant is not alive, Death Certificate should be submitted with application.
- m) Candidates applying under the category of UEAP Overseas Pakistanis should submit the proof of his/her father/mother working outside Pakistan (from the Embassy / Consulate of Pakistan in that country).
- n) Affidavits / undertaking on Rs. 20/- stamp paper as per specimens given in Appendix I&II mentioning that the candidate is not student in any Public Sector Medical Institution in the country & that the documents submitted are not false. (These Affidavits shall be submitted at the time of getting admission after being selected to any seat).
- 10.6 All seats in various districts are open for competition within such district.
- 10.7 Competition in each district shall take place between candidates of that district, thus a candidate from one district shall not compete with a candidate of the other district.
- 10.8 The seats which remain vacant at the time of selection, shall be filled in by admitting the next candidate on combined merit list from the same district. In case a seat falls vacant during the first ninety (90) days of the academic year of admission, the same shall be filled in by adopting the aforesaid procedure.
- 10.9 Copies of required documents duly attested by grade 18 or above government officer must be attached.
- 10.10 Application form with all relevant documents must be properly filled & tagged
- 10.11 Application forms completely filled along with the attested photocopies of required documents shall be submitted at the designated branches of TCS centers. Incomplete forms are liable to be rejected. If any column does not apply to a candidate it should be crossed as 'X'. No form shall be accepted after expiry of the due date for submission of application forms. Rs. 370/- will be charged as service charges by TCS and the candidates will be issued a receipt of this amount by TCS.
- (a) Make special care while writing the address in the columns of Application Form, Admit card, so that the address is written correctly to ensure effective correspondence. Incorrect address causes inconvenience & the Post/correspondence is returned unattended, for which the responsibility shall lie on the shoulders of candidate
- (b) Write down your proper Telephone / Mobile number carefully & ensure that the number remains on for any communication from the university or college. University/college does not take any responsibility in case the telephone/mobile number is not replied by the candidate.
- Note: The list of eligible candidates will be displayed on notice board/website of SMBBMU Larkana. All the candidates are advised to check their data including Name, Fathers Name, District of Domicile, Marks of Matric, Inter/FSc science subjects and deduction. Any discrepancy must be reported within three days.
- 10.12 The Chairman of the Admission Committee shall announce the selection of any candidate, selected in accordance to the overall merit obtained by the candidates in each district by displaying the list on the Notice Board of respective Institution and website of university.
- 10.13 The Admission Committee shall have the discretion to cancel the admission of any candidate, who indulges in violence, uses abusive language, becomes insolent or misbehaves with the Admission Committee.
- 10.14 The Admission Committee shall not consider any candidate for admission, if he/she is found involved in any kind of irregularity or fraud at any stage of Admission/Selection process.
- 10.15 After declaration of Entry Test result, objections regarding entry test marks shall be submitted to the concerned selection center for the redressal within the stipulated time as mentioned in the schedule. No objection shall be entertained after the objection time is over.
- 10.16 The provisional merit list is liable to be corrected

within due course of time before declaration of the Final Merit list by the admission committee. No candidate whose name appears in the provisional list can claim the admission on that basis. After declaration of Provisional Merit list, the objection regarding discrepancy in marks of matriculation, HSSC, deduction or addition shall be submitted within stipulated time. If the objection is found genuine, it will be considered and incorporated in final merit list.

- 10.17. No objection / correction shall be entertained after the declaration of Final Merit List.
- 10.18. After declaration of Final Merit List the selected candidates according to their district merit quota shall be issued Provisional admission letters.
- 10.19. The selected candidates have to submit all the original documents along with three additional sets of photocopies and 06 passport size photographs at the time of admission.
- 10.20 All admissions are provisional subject to the verification of documents submitted by the candidate and also the correct observance of the rules. At any stage if it is found that the candidate has got admission on the basis of false or incorrect documents / information or against the rules of admission, his/her admission shall be cancelled immediately by the institution concerned after giving him/her an opportunity to show cause (within Seven days) as to why his/her admission should not be cancelled and all fees paid shall be forfeited and Institution will have the right to take legal action against the candidate as per rules.
- 10.21 The date of admission in first year MBBS / BDS course shall be taken to be the first day of the corresponding academic year (date of start of classes), irrespective of the fact as to when the candidate has been selected for admission in the institution.
- 10.22 The rules and regulations for holding different professional examination for MBBS / BDS. course shall be in accordance with the rules and regulations framed by Pakistan Medical and Dental Council (PM&DC) for the Degree of MBBS

/ BDS. as amended from time to time and as approved by the University.

- 10.23 There will be cancellation of admission to MBBS if fails to pass 1st Professional Examination in four attempts availed or un-availed as per PM & DC rules.
- 10.24 The selected candidates shall get themselves enrolled with the institution by depositing the prescribed fees in the account of Vice Chancellor Shaheed Mohtarma Benazir Bhutto Medical University before First Professional examination, failing to which his/her admission would be cancelled.
- 10.25 Re-appearing of candidate in the entry test for any reason, who already has been admitted at SMBBMU is strictly prohibited. Any student found doing this practice shall get his/her previous admission cancelled and also shall not be given admission if his/her name stands in fresh list of selected candidates.
- 10.26 The provisions made in this prospectus are liable to be modified, relaxed or amended by SMBBMU from time to time, and such changes shall be applicable to all concerned institutions.

10.27 MEDICAL EXAMINATION

The selected candidates will submit medical fitness certificate from registered medical practitioner along with following medical reports.

- i. X-Ray Chest (PAV)
- ii. Urine DR Report
- iii. Blood Sugar Level Fasting & Random
- iv. Blood CP+ESR Report
- v. Vaccination Certificate against HBV
- vi. HBs Ag and HCV Abs. report
- vii. Foreign Nationals as well as local candidates also will have to produce a certificate of their HIV status from prescribed laboratory in Pakistan in addition to above reports.

11. RULES FOR WORKING OUT ADJUSTED MARKS IN HIGHER SECONDARY CERTIFICATE (HSC) EXAMINATION.

- 11.a. The following marks shall be added or deducted from the total marks of three science subjects of HSSC/Equivalence (Pre-Medical) in-order to prepare the adjusted marks.
1. Eleven Marks will be added to all Hafiz-e-Quraan candidates subject to the clearance of Hafiz-e-Quraan interview, to be conducted by Admission Committee of each selection centre and production of a legitimate certificate from an approved institution that he/she is a Hafiz-e-Quraan.
 2. 10 Marks per year shall be deducted from the cumulative score of three science subjects, if there is a gap of more than two years between the year of Matriculation and year of Entry Test. (Two year is normal gap between matriculation & HSSC / Equivalence). Suppose a candidate is appearing in the Entry Test in year 2015.
 3. In-case the overall score of two or more candidates is equal, the candidate securing higher marks in HSSC /A Level (Pre-Medical) Shall be ranked higher on merit. If HSC/A Level marks of two or more than two candidates are same then higher marks in Matriculation shall be ranked higher on merit for the purpose of admission and if the Matriculation marks of two or more than two candidates are also equal then the candidate, older in age shall be ranked higher on merit for the purpose of admission.
 4. Those candidates who have got admission in MBBS/BDS in any public sector university/colleges are not eligible to apply in the Entry Test.

NOTE: Obtaining of equivalence of marks certificate from IBCC shall be the responsibility of the candidate.

Example No.1

Matriculation	2013
Entry Test	2015
Deduction	Nil

Example No.2

Matriculation	2012
Entry Test	2015
Deduction	10

Example No.3

Matriculation	2011
Entry Test	2015
Deduction	20

.....and so on



11.b. FORMULA FOR WORKING OUT THE OVERALL MERIT

- | | |
|---|---------------|
| a. Matriculation Science / O Level Equivalent | 10% weightage |
| b. HSC (Pre-Medical) / A Level Equivalent Examination | 40% weightage |
| c. Entry Test | 50% weightage |

Note: Only science subjects (Biology, Chemistry and Physics) will be considered in HSSC result for making district merit list.

Example:

If a candidate has obtained the following marks

- | | |
|--|---------------------|
| a. Matric Science / O Level Equivalence Examination | 650 / 850 or 76.47% |
| b. HSSC/ A Level / Equivalence (Science subjects only) | 480 / 600 or 73.33% |
| c. Entry Test | 300 / 400 or 75.00% |

His/Her Merit will be calculated as follows

- | | |
|--|-------------------------|
| a. Weightage for SSC O-Level / Equivalent | = 76.47% x 0.1 = 7.65% |
| b. Weightage for HSC/ A-Level / Equivalent | = 73.33% x 0.4 = 29.33% |
| c. Weightage for Entry Test | = 75.00% x 0.5 = 37.50% |

Overall Merit of the candidates = a+b+c=7.65+29.33+37.50=74.48

All allocations in percentages will be rounded up to two decimal points.

Similarly the merit calculation of A-Level (equivalence) candidates will be calculated for three science subjects (Biology, Chemistry and Physics / Mathematics) according to the IBCC formula given below for final merit calculation.

A Grade	85/100
B Grade	75/100
C Grade	65/100
D Grade	55/100
E Grade	45/100

Example of formula applied for merit calculation of candidates with A-Level/Equivalence Examinations.

If a candidate has secured the following grades in science subjects:

Biology	A Grade.....	85/100
Physics / Mathematics	A Grade.....	85/100
Chemistry	B Grade.....	75/100
	Total	245/300

Since the HSSC Pre-Medical examination has 200 marks in each science subject (Biology, Chemistry and Physics/Mathematics). Making a maximum total of 600 marks, therefore the acquired marks of A-level candidates will be multiplied by two.

$$245 \times 2 / 300 \times 2 = 490 / 600 = 81.66$$

Now 40% of 81.66% will be considered for weightage in the total marks for final merit of an A-level / equivalence candidates to be at par with HSSC (Pre-Medical) candidates, which is as follows

$$81.66 \times 0.4 = 32.666 = 32.66.$$

12. ADMISSION COMMITTEES OF THE SELECTION CENTERS

CHANDKA MEDICAL COLLEGE LARKANA & BIBI ASEefa DENTAL COLLEGE LARKANA

For MBBS& BDS

1.	Prof: Dr. Sher Muhammad Shaikh	Principal, CMC, Larkana	Chairman
2.	Prof. Dr. Sikander Ali Mughal	Registrar SMBBMU Larkana	Member
3.	Prof. Dr. Riaz Ahmed Shaikh Dean Faculty of Basic Medical Sciences	Professor of Pharmacology & Director Admissions	Member
4.	Prof. Dr. Abdul Haleem Shaikh	Professor of Radiology	Member
5.	Prof. Dr. Khursheed Ahmed Abbasi	Professor of Paediatric	Member
6.	Prof. Dr. K.Das	Vice Principal CMC Larkana	Member
7.	Prof. Noor Ahmed Khoso	Principal, BADC, Larkana	Member

GHULAM MUHAMMAD MAHAR MEDICAL COLLEGE SUKKUR

For MBBS

1.	Prof. Haresh Chand	Principal, GMMMC Sukkur	Chairman
2.	Prof. Dr. Sikander Ali Mughal	Registrar SMBBMU Larkana	Member
3.	Prof. Amar Lal Gurbakhshani	Profesor of Physiology	Member
4.	Prof. Ghulam Haider Rind	Vice Principal, GMMMC Sukkur	Member
5.	Prof. Altaf Ahmed Shaikh	Professor of Medicine	Member
6.	Dr. Abdullah Khilji	Admission Co-ordinator	Member

12.a. Appellate body

Vice Chancellor is the appellate body for any complaint/grievance against decision of Admission Committee. Appeal can be filed within five days of declaration of the final merit list.

13. FEES PAYMENT RULES:

- 13.2 Fees for 1st year should be deposited in the name of Vice Chancellor, SMBBMU within Two weeks of admission and if not received within due date, admission is liable to be cancelled after issuing show cause.
- 13.3 Fees for the remaining years shall be paid without late fee by 31st March of each year and with 2% late fees upto 15th April of each year
- 13.4 The fee is subject to revision by the University at any time; however the old students shall pay their fees according to the schedule given in their respective prospectus of the admission year.
- 13.5 The candidate who fails to clear his/her dues within stipulated time period his/her examination form will not be forwarded to Controller of Examinations, of the University and shall not be allowed to appear in the first professional and will be offside next year.

13.6 Fees Schedule:

S.No.	Category	1st Year	2nd Year	3rd Year	4th Year	Final year
a. Open Merit, Reciprocal and PTAP Students						
1	Admission Fee	18,700	--	--	--	--
2	Tuition fee Rs.	31,900	31,900	31,900	31,900	31,900
	Total fees Rs.	50,600	31,900	31,900	31,900	31,900
3	Transport Fees Rs.	4,950	4,950	4,950	4,950	4,950
	Total payable Rs.	55,550	36,850	36,850	36,850	36,850
b. UEAP Local Students						
1	Admission Fee	24,200	--	--	--	--
2	Tuition Fees Rs.	440,000	440,000	440,000	440,000	440,000
3	5% Income Tax*	23,210	22,000	22,000	22,000	22,000
	Total payable Rs.	4,87,410	462,000	462,000	462,000	462,000
c. UEAP Overseas Pakistanis & Foreign Nationals						
1	Admission Fees US \$	US \$ 660	--	--	--	--
2	Tuition Fees US\$	US \$ 8,800	US \$ 8,800	US \$ 8,800	US \$ 8,800	US \$ 8,800
3	5% Income Tax*	US \$ 473	US \$ 440	US \$ 440	US \$ 440	US \$ 440
	Total payable US \$	US \$ 9,933	US \$ 9,240	US \$ 9,240	US \$ 9,240	US \$ 9,240
d.	Hostel Fees Per Year (For all student categories including UEAP) Rs.					8,500
e.	PM&DC Student Registration Fee					3,000
f.	Mark Sheet Verification Fee (For Selected Candidates)					200
g.	University Enrollment Fees					1000
h.	Library Registration Fees					500

*As per income tax ordinance 2001 through finance act 2013, section 236 I, "Every educational institution is required to collect advance income tax@ 5% on the amount of fee paid to an education institution, if the fee exceeds Rs. 2,00,000 annually."

NOTE:- HOSTEL ACCOMODATION FOR THE STUDENTS IS SUBJECT TO AVAILABILITY

13.7. FEES FOR REPEATERS

Students admitted under Regular, General merit and University Education Assistance Programme (UEAP) will be charged tuition fee in proportion to their repeated subjects in case of their failure in any examination.

- 13.8 Sons/daughters of regular Employees of SMBBMU shall be charged 50% of the total fees including UEAP (Local Self Finance, Overseas & Foreign Nationals) for undergraduate courses.

14. RULES FOR MIGRATION

- 14.1 The following categories of students shall not be allowed for migration:
- (i) Those who are admitted against:
 - a. Reserved seats
 - b. Special Seats
 - c. Self Finance Seats
 - (ii) Those who are admitted on the basis of merit cum Choice in the college not tagged to their district of domicile.
 - (iii) Those who are admitted against merit cum choice seats in college / institution outside the province of their domicile, including those who are admitted in FJMC, Lahore and Azad Jammu & Kashmir.
 - (iv) Those who have not passed the second professional MBBS examination (second year).
 - (v) Students having final aggregate score less than the closing score required for admission to 1st year MBBS in the recipient college of the university in that year
- 14.2 Those students who do not fall in the above categories shall be allowed for migration only:
- (i) On mutual exchange basis between students of same class and the same category.
 - (ii) Provided expected study period of the student in the recipient college would not be less than one academic year.
 - (iii) Migration will be allowed only once during the entire period of medical education of a student.
 - (iv) Any students who migrates unilaterally after clearing all dues to other medical college / institution and seat thus falling vacant on account of this unilateral migration will be forfeited.
 - (v) Migration fee of Rs. 50,000 (Rupees fifty thousand only) will be charged by SMBBMU to effect the migration.
- 14.3 Migration of students from Private Medical Colleges / Universities to SMBBMU shall not be allowed under any circumstances.
- 14.4 All scholarships / financial assistance shall be cancelled once the student migrates to another college/institution.
- 14.5 The migrated student shall not claim any compensation for the loss of time due to Difference in starting/ending of academic sessions and in examination schedules between concerned institutions.
- 14.6 Refund of Fee
- i. Admission fee shall not be refunded in any case
 - ii. 50% fee shall be refunded within one month of cancellation of admission or migration from the university.
 - iii. 25% fee shall be refunded within one month to 3 months of cancellation of admission or migration from the university.
 - iv. No fee shall be refunded after 3 months of start of session.
- 14.6 Following procedure/Criteria will be observed for migration of children of Pakistan Citizen working abroad.
- i. He /she will give proof weather his/her college is recognized by the relevant Medical Council of that country and its name is incorporated in the directory of W.H.O.
 - ii. He/she will give proof that his/her parents at the time of admission in foreign medical college /institution were settled in that country and that now they stand migrated to Pakistan.
 - iii. The fee charged by the constituent colleges of SMBBMU would be the same as in vogue in the foreign college /university at the time of student ship of the candidate.
 - iv. The placement of migrated student in a particular class shall be decided by selection committee of the university and its decision will be final.

- v. He/she will provide certificate from his/her college /university that:
- He/she has not been debarred or expelled from the college/university
 - No disciplinary action is pending against him/her.
 - He/she is not repeatedly failing to clear the examination of the college of university.
- 14.7 The son/daughter of government servant may be considered for migration, only when:-
- At the time of admission in the institution where he/she is presently admitted, his/her parent(s) were already posted at the place, and the transfer of the parent was effected after his/her admission. This will not be applied to the contractual employee.
 - That his/her family has been shifted to the cities of constituent colleges.
 - That he/she meets minimum eligibility criteria laid down for admission at SMBBMU.
 - That he/she fulfills other conditions as mentioned in SMBBMU migration rules.
- 14.8 The son/daughter of faculty member / employee of SMBBMU may be considered for migration, only when:-
- At the time of admission in the institution where he/she is presently at admitted, his/her parent were already serving SMBBMU as faculty member /employee. This will not be applied to the contractual employees.
 - That his/her family has been shifted to Larkana / Sukkur.
 - That he/she meets minimum eligibility criteria laid down for admission at SMBBMU.
 - That he / she fulfills other conditions as mentioned in SMBBMU migration rules.
- 14.9 NO STUDENT SHALL BE ALLOWED TO ATTEND CLASSES AT MEDICAL COLLEGES / UNIVERSITIES OTHER THAN MEDICAL COLLEGE / UNIVERSITY WHERE ADMITTED. HOWEVER THE SON/DAUGHTER OF TEACHERS OF SMBBMU CAN ATTEND CLASSES AT ANY CONSTITUENT COLLEGE OF SMBBMU LARKANA WITH THE PERMISSION OF COMPETENT AUTHORITY.



15. SCHOLARSHIPS & FREESHIPS

These are intended to help the poor, deserving, talented, regular and meritorious students. This facility shall be stopped at any time by the Head of Institution if he feels that the student / awardee is not making progress in his/her studies and indulging him/herself in unhealthy activities prejudicial to his/her educational advancement, or against whom an F.I.R. has been lodged in any criminal case.

15. (a) MERIT SCHOLARSHIP:

- (i) Every year merit scholarships shall be awarded proportionately to top ten meritorious students of all constituent colleges on the basis of result of the Professional MBBS / BDS University Examination.

Distribution of scholarship shall be as follows:

CMC 5 scholarships

GMC 3 scholarships

BADC 2 scholarships

- (ii) The value of the scholarships will be as follows:

- (a) Students standing at first position
Rs.1500 per month
(b) Students standing at 2nd & 3rd positions
Rs.1200 per month to each student
(c) Students standing at 4th to 10th position
Rs.1000 per month to each student

- (iii) These merit scholarships shall be given irrespective of any other scholarship being received by the student.

- (iv) In case of a tie on last winner of scholarship e.g. having equal marks, the award of Merit Scholarship will be given to the student having better academic record/progress in previous professional examinations of the university.

(b) FREESHIPS:

- (i) Eligibility.
- (a) High academic percentage.
- (b) Brother and sister or two brothers or two sisters studying in the same Institution. Only junior student shall be the beneficiary of 50% of tuition fees.
- (c) Fee concession shall not be applicable on students admitted under UAEP, overseas Pakistani, Foreign National category.

- (d) Low income family background on actual information basis. To be certified from concerned Mukhtiarkar and countersigned by SDM.

- (ii) Remission of the whole or half of the tuition fees may be allowed by the Principal of constituent college to the students belonging to the tagged districts. The total No: of freeship will not exceed ten percent of number of students in each batch on the college roll.

- (iii) Remission of fees means exemption from paying tuition fees only, full or half as the case may be. The student who are granted full or half remission of tuition fees shall be required to make full payments for all other subscriptions/funds.

- (iv) Application for remission shall be submitted by the students on the date to be fixed by the Head of Institution. The application should be accompanied by certificate from the Deputy Commissioner or Mukhtiarkars of district/taluka to which the student belongs, stating the financial circumstances of the applicant's parent / guardian.

- (v) The grant of such remission will rest with the Head of the institutions and will depend upon the circumstances of a student with regard to his/her studies. Absence from or failure in a professional examination, breach of discipline, neglect of studies or reprehensible conduct shall entail the loss of the concession.

- (vi) Remission will be granted on yearly basis subject to the satisfactory progress and failure will not be awarded free ship for that year.

- (vii) Student receiving stipends/endorsement will not be eligible for Free-ship concession.

- (viii) Students admitted under UEAP shall not be eligible for free ship.

- (ix) Those who have already got 50% concession on basis of their parent as Teacher of SMBBMU Larkana shall not be eligible for freeship.

Note: As per resolution No: 22.03 passed in 22nd syndicate meeting of SMBBMU held on 8th March 2014, the children of employees of SMBBMU admitted in SMBBMU during their service time shall be given benefit of 50% concession in fees upto completion of their study period.

16. REGULATIONS RELATING TO DISCIPLINE, CONDUCT, WELFARE AND CODE OF HONOUR FOR THE STUDENTS OF THE MEDICAL UNIVERSITY AND ITS CONSITTUENT COLLEGES.

I) DEFINITIONS.

1. "University" means Shaheed Mohtarma Benazir Bhutto Medical University Larkana.
2. "Vice Chancellor" means the Vice Chancellor of Shaheed Mohtarma Benazir Bhutto Medical University Larkana.
3. "Dean" means the Dean of relevant faculty of the University.
4. "Chairman" means the Chairman of teaching department of the university.
5. "Principal" means the Principal of constituent college.
6. "Academic Council" means the Academic council of the University, consisting of chairmen/ in-charges of the departments.
7. "Disciplinary Committee" means Committee Established under Statutes of Shaheed Mohtarma Benazir Bhutto Medical University, for the purpose of taking any disciplinary action.
8. "Director Students Affairs" means an officer appointed by Syndicate / Vice Chancellor as a Director of students' affairs.
9. "AO Hostels" means administrative officer for hostels appointed by the Vice Chancellor.
10. "Warden" means an officer appointed by the Vice Chancellor as warden of a hostel.
11. "College" means a constituent college.

(II) GENERAL DISCIPLINE & CODE OF HONOUR STUDENTS CONDUCT RULES

These rules are applicable to Undergraduate students of the University and its constituent Institutions.

- 1 No student or students shall be allowed to:
 - i) Form any type of society / association / organization.
 - ii) Invite any outsider to address any meeting at the University or its constituent college/ institute/ school/ hospital etc whether academic, social, religious or political, without prior written permission of the authorities. Decision of authorities will be final and taken on case to case basis.
 - iii) Paste any poster, pamphlet, fix banners or graffiti (wall chalking), on the wall, in the premises of the University or its constituent college / institution/ school/ hospital etc.
 - iv) Roam around or play in the premises during teaching hours and / or Clinical posting.
 - v) Arrange any program, picnic, musical concert, sports activities etc. on their own, without prior written permission from the authorities.
 - vi) Collect money for any purpose whatsoever.
 - vii) Address the media or the national press on any subject.
 - viii) Possess or use weapon and / or any other harmful items, inside the premises of university/ college/ hospital & hostels.
 - ix) Enter administrative / department offices, telephone exchange, I.T Department or teaching

- areas like laboratory, lecture hall of the institution or department without purpose or prior permission.
- x) Use office equipment / machinery like telephone, computer, printer, typewriter, overhead projector, or multimedia etc without prior permission.
 - xi) Park his / her car inside the premises of the college / University unless specially allowed by the competent authority.
2. Smoking, pan chewing, littering, spitting and other activities, prejudicial to the conduct are prohibited in the classroom, Laboratories, seminar / tutorial rooms, library during and after college hours and wards during clinical postings.
 3. University / College Identity Card (ID), should be displayed, at all times, when the students are in the premises of the University or its constituent college / institute / School / Hospital etc. Faculty members and security staff are authorized to check I.D cards at any time.
 4. The Students should wear apron / white coat during classes and hospital postings.
 5. All communication intended for higher authorities need to be routed through proper channel (Principal).

(III) STUDENTS DISCIPLINARY RULES & PROCEDURES

Any student involved in violating the discipline or committing indisciplinary act shall be dealt with according to the University conduct rules and the procedures mentioned below:-

1. Each constituent college will have Disciplinary Committee to be notified with the approval of the Vice-Chancellor to deal with all the disciplinary matters.
2. The Principal on suo-moto or on any complaint, may initiate action against any student of the college or refer the case to the Disciplinary Committee of the college for appropriate recommendation.

3. Before taking any action, the Principal shall serve a show-cause notice to the student indicating briefly the charges against him. The accused student will have to submit a written reply within seven days. He / She will be offered a chance for personal hearing after which the Principal of the constituent college is empowered to suspend, rusticate or expel the student as per rules.
4. The student, whom the Principal has suspended, rusticated or expelled from the college may appeal to the Vice-Chancellor against the decision of the Principal within 30 days.
5. Any student whose name appears in F.I.R. pertaining to any nonbailable offence as specified in the criminal procedure code (Cr.P.C) will be suspended. During the pendency of the case he/she will not be allowed to attend the classes or take up any examination.

(IV) PENALTIES

(a) WARNING / SUSPENSION

Acts of misconduct liable for warning / suspension (from all academic activities) for a period up to six months.

1. Misbehaves or quarrels with any teacher or member of the staff.
2. Is generally disobedient.
3. Spreads false rumours.
4. Uses unbecoming, indecent or filthy language.
5. Incites other students to violence.
6. Is inappropriately dressed.
7. Shouts, abuses, quarrels or fights with fellow students.
8. Raises slogans to hurt others, politically or religiously.
9. Interferes with the administration including the mode or schedule of the examination or internal assessment.
10. Indulges in acts of immorality.

11. Indulges in any kind of political activity including displaying posters or play cards within the College premises.
12. Remains absent continuously for more than 4 weeks without prior permission.

Any student who commits above acts of misconduct is liable to one of the following penalties.

- i. The student may be asked to tender an apology, verbal or written. This shall be placed on the student's record.
- ii. A student may be placed on probation for a period upto one year. If during the period of probation he fails to improve his conduct as above, he may be rusticated from college.
- iii. A student may be fined up to Rs. 50,000/-.
- iv. Principal of the college if finds necessary may suspend the student for a period not exceeding ten days for pending enquiry into the misconduct of the student.
- v. The student may be suspended from college roll not exceeding six months.

(b) RUSTICATION

A student may be rusticated for a period extending up to 3 years due to any of the following acts:-

1. Taking forceful possession, making unauthorized use or damaging any property.
2. Involving him/herself in any agitational activity.
3. Found indulging in activities, prejudicial and detrimental to the good order of the College.
4. Adopting unfair means during examination.
5. Disobeying an order of suspension passed against him/her.
6. Any other act, which the principal or the disciplinary committee considers inappropriate.
7. Anybody who does not submit the prescribed undertaking about non-involvement in political activities.

Note: Any student suspended or rusticated for the reasons mentioned above shall not be allowed to attend classes or appear in the examination / reside in hostels and treated as persona non grata.

(c) EXPULSION

A student is liable to be expelled from the college if he/she commits any of the following acts and this order shall be final and irrevocable. If he/she

1. Is found in possession of fire arms or lethal weapons or Narcotic drugs like heroin, cannabis, chars, cocaine & opium products etc, in the college premises, hostels, examination halls, teaching hospitals or any other area as specified by the university administration.
2. Remains absent for more than three months without permission of the Principal / Dean, his / her admission shall be cancelled by the disciplinary committee of that college / institute.
3. Student convicted by the court of law for any criminal offence.



17. Sports & Extra-Curricular Activities

- 17.1 Any student having national or provincial recognition in any game/sport should inform principal of his college just after his admission.
- 17.2 The Medical Institutions shall arrange to provide as many indoor games as possible for the staff/students.
- 17.3 (a) No game shall be played during the college or hospital duty hours without prior permission from the Principal of the respective college.
(b) Students can take part in anyone or more of these games according to their choice.
- 17.4 Visits to places of scientific, historic and cultural interest can be arranged by the administration of the concerned college with approval of the competent authority SMBBMU, Larkana.
- 17.5 As per resolution No. 22.06 paased in 22nd syndicate meeting of SMBBMU Larkana following tours will be permissible (upto the permissible limit of college buses)
- 1st year Sukkur/Moenjo Daro
 - 2nd year Kotdiji
 - 3rd year Hyderabad
 - 4th year Karachi
 - Final year All Pakistan
- 17.6 Lectures on extracurricular activities by the distinguished visitors shall be arranged with the approval of the Principal of respective institution.
- 17.7 Members of the College Students Council, shall be responsible to organize, coordinate and conduct the extra-curricular activities and sports for the students, under the directions of Principals of the respective colleges. The Council shall be responsible for the following activities:
- (i) Sports.
 - (ii) Institution Magazine:
 - a) The Magazine will be published and will contain scientific / general articles written by staff and students including record of the activities of the institution and students.
 - b) An editorial board consisting of the staff and the students will publish the magazine.
 - (iii) Social Society: The Society may arrange annual Talent hunt show consisting of various social activities.
 - (iv) Debating Society



18. LIBRARY

- 18.1 The library shall be open for teaching staff, students of the institution and the PGs of the attached teaching hospital.
- 18.2 Books and journals will be issued to the students only if they deposit their student identity cards to the librarian.
- 18.3 Text books prescribed by the University and reference books shall only be read in the reading / references library.
- 18.4 Students enrolled in the institution, shall be entitled to borrow books from the Book Bank/ lending Library depending upon availability.
- 18.5 Each member is entitled to borrow maximum ten books at a time for an academic year from 1st year to final year MBBS,
- 18.6 The students will be required to pay Registration fee of Rs. 500/- (non refundable).
- 18.7 All the books are to be returned and the clearance from the Book Bank / lending library should be obtained by the borrower soon after passing the relevant examination.
- 18.8 Students who fail to return the books to the Book Bank /lending library in time shall not be issued any type of certificate.
- 18.9 Books issued from library must be kept in good condition. Any kind of marking inside the books is not allowed. Any damage or loss of books shall be liable to payment of full price of the books by student.
- 18.10 Students must display college identity card while sitting in the library.
- 18.11 SMBBMU encourages involvement of undergraduate students in research activities, however; it has zero tolerance for plagiarism.



19. Hostels and Mess Rules

For the purpose of admission to the hostel, allotment of accommodation, maintaining discipline and conduct, arranging and organizing messes, the following rules and regulations as laid down hereinafter shall be followed.

A. CONDITIONS OF ALLOTMENT FOR ACCOMMODATION IN THE HOSTEL.

1. The preference of allotment of hostel accommodation shall be as follows:
 - i. Districts other than Districts where the college is located.
 - ii. Tehsils of district where the college is located.
 - iii. The city where the college is located.
2. Allotment in the hostel shall not be claimed as a matter of right even when a person is a bonafide student of the institution.
3. Allotment for accommodation in the hostel will be considered only after the Allotment Committee has scrutinized the application and satisfied itself with the merit and eligibility of the student and that his stay in the hostel shall in no way be prejudicial to the interest of other residents in hostels in particular and the institution in general.
4. Allotment of accommodation in the hostel will be for one Academic year only, after which this allotment shall stand cancelled. For re-allotment in the next year a fresh application shall be submitted.
5. Maximum period of stay in hostel shall under no circumstances be more than 5 academic years for MBBS and 4 for BDS Course provided that fresh allotment is made in each year by the competent authority in accordance with the allotment policy.
6. Guests shall not be allowed to stay in the hostel.
8. Limited accommodation is available at GMMMC Sukkur for which priority shall be given to candidates belonging to far remote areas.

B. CONDITIONS OF INELIGIBILITY.

The following shall be ineligible for allotment of accommodation in the hostel:-

1. A student rusticated, expelled or debarred from the college or any other educational institution inside or outside Pakistan.
2. A student wanted by the police or any other law-enforcing agency(ies) in criminal case(s), or against whom case is/are pending in any court of law of the country on account of anti-state or anti-social activities or for criminal offense(s) involving moral turpitude or has been or has remained under detention under any preventive law.
3. Care will be taken that the mere pending of a criminal case against a student in court of law shall not render him ineligible for admission in the hostel. The disciplinary committee of the institution may, however, on finding the record that the conduct of student therein was of a nature as to bring disgrace to the college shall render the student unfit for allotment of accommodation in the Hostel. It will also be ensured that on honorable acquittal by the court, the student so declared ineligible, be reconsidered for admission in the Hostel and may be so admitted if otherwise found eligible.
4. A student convicted by a court of law in the country on a moral, social or any other criminal offense.
5. A student who has been found and held guilty of misconduct or indiscipline by the competent authority.
6. A student whose presence in the hostel is deemed to be detrimental or prejudicial to the peace, tranquility and academic atmosphere of the hostel or institution and the interest of the residents of hostel and campus.
7. Resident once expelled from the hostel.

C. ALLOTMENT PROCEDURE:

8. Application for allotment of accommodation in the hostel be made by the bona fide student of the medical institution on prescribed form H-1 accompanied by the undertaking from the parent/guardian on the prescribed form H-2 attested and verified by the Judicial Magistrate of the area along with their National Identity Cards and two sureties, identifying the guardian/parent and also certifying good conduct of the applicant.
9. In case of foreign students, the recommendation and undertaking on the prescribed proforma for the admission and the guarantee for the payment of hostel dues and good behavior will be obtained from their respective Embassies or Consulates.
10. The application shall be considered for allotment by the Allotment Committee, according to the laid down criteria. The allotment committee shall have the right to reject any application without assigning any reason.
11. Allotment will be renewed on yearly basis after expiry of valid date of their first allotment. The students of UEAP basis shall also pay the hostel fees and follow the same procedure.
12. After the names of the successful candidates are announced, they shall comply with the allotment requirements to the hostel within the prescribed time limit else their names shall be taken off from the allotment list.
13. The allotment of accommodation will be made after the candidate has produced payment receipt of the fees/ dues against him.
14. Residents shall sign a receipt of hostel property/assets in their rooms and shall be responsible for any loss or damage thereto.
15. Residents shall strictly abide by all the rules of discipline, conduct and regulations that may be enforced in the hostel from time to time.

D. CONDUCT & DISCIPLINE:

The following are the rules in addition to the rules of conduct which may be prescribed from time to time shall constitute acts of indiscipline and violation of

hostel discipline for which action may be taken against the hostel resident concerned, by the college authorities:

a. Acts of indiscipline and misconduct:

1. Keeping firearms and other lethal weapons or any other material not necessary for academic pursuits in the hostel even if licensed.
2. Keeping unauthorized persons in the room / seat allotted to a resident.
3. Shifting to a seat /room other than the one allotted to the resident without prior permission of the allotment committee.
4. Sub-letting the seat/room allotted to the resident or any other room lying vacant due to any reasons.
5. Not handing over the possession of the room/seat to the authorities at the end of period for which allotment was made.
6. Non-payment of hostel dues during the period of the year for which allotment was given in the hostel.
6. Keeping or making use of illicit drugs or other intoxicants, not including drugs prescribed by authorized medical attendants on account of any illness suffered by the hostel resident.
7. Keeping electric appliances such as refrigerator, air conditioner, television, oven, burner, heater, etc., in the room.
8. Parking cars or other vehicles in places other than the designated parking lots.
10. Engaging in any immoral, agitational and violent activities or creating nuisance or disturbing the peace and tranquility in the college campus / hostel premises.
11. Inviting or entertaining female visitors in the male hostels or male visitor in the female hostel except authorized parents/guardians only in specified visitor's area.
12. Causing willful damage and / or causing damage by acts of vandalism, removing or damaging hostel or institution property.

13. Barricading stairs, corridors, gates and other areas in the hostel / campus of general use.
 14. Staging sit-ins, lockups, occupying hostel warden's or other administrative offices.
 15. Use of abusive languages towards other residents and / or institution authorities and employees.
 16. Use of hostel rooms or premises for group parties, political assemblies and for purposes other than those for which they are meant.
 17. Inviting outsiders to address hostel residents without the permission of authorities.
 18. Pasting of posters/chalking on hostel or other campus buildings, premises or compound walls or any portion thereof.
 19. Inciting parochial, linguistic, sectarian or religious feeling among hostel residents.
 20. Staying away from the hostel premises in case of male students after 11 p.m. till 6 a.m. and for female students after 9 p.m. till 6 a.m. without prior permission from hostel authorities.
 21. Cooking in the hostel rooms.
- b. Following rules shall strictly be observed.**
1. Late comers or those leaving the hostel early will be required to sign the register at the hostel gate or reception stating the reasons for late coming or early departure.
 2. The hostel authorities shall reserve the right to search the belongings and baggage of the residents at the time of entering the hostel or while residing in the allotted accommodation.
 3. The college administration is not responsible for the loss of any belonging of the hostel resident.
 4. All damages to room / hostel will be repaired at the cost / expense of the boarder responsible.
 5. No newspapers, periodicals or magazine other than those authorized by warden shall be brought into the hostel by any boarder.
6. Students shall take due care of the bathrooms and taps and shall not allow them to run waste. Any one found doing this intentionally will be liable to punishment.
 7. Defacing walls and fixtures is strictly prohibited, moreover the furniture or fixtures will not be moved from one room to another and the residents are particularly warned against removing furniture from the mess and common room.
 8. Students must keep their rooms, clean and tidy. The beds should properly be arranged and covered with bed sheets. Dirty clothes should be stored separately.
 9. Spitting in public or private rooms, verandah or on stairs is prohibited.
 10. All waste papers and garbage must be placed in receptacles provided for the purpose.
 11. Every part of the hostel premises shall be freely open for inspection by the superintendent or warden at all times.
 12. No religious ceremony likely to injure the feelings of other boarders shall be arranged in the hostel.
 13. No boarder shall indulge in any amusement that disturbs the other boarders.
- E. ACTION AGAINST INDISCIPLINE:**
1. Depending upon the severity of the indiscipline or act of violation on the part of the resident(s) of the hostel, the defaulter student shall be dealt with according to the University rules.
 2. Following the allegation of act of violence, the Principal may provisionally cancel the allotment of accommodation in the hostel and also refer the matter to the college disciplinary committee for probing into the matter and recommendation for necessary punishment.
 3. In case of loss due to act(s) of vandalism, the matter relating to assessment of damage / loss will be referred to the Disciplinary Committee, that shall assess the loss and also fix the responsibility and extent of loss on the person(s) liable for the act from whom recovery should be

effected. In the absence of evidence leading to fixation of individual responsibility, the Disciplinary Committee may decide to order the recovery from all the residents or such of the residents as may be held responsible for act of vandalism.

F. STUDENT MESS:

1. Any group of students, not less than 20 and not more than 60 or the number as may be fixed by the provost depending on particular situation in the hostel, who may wish to run their mess shall obtain prior permission on prescribed form, from the provost on the recommendation of the warden. The resident students should nominate the manager of mess, who shall be one of the resident students of that Hostel.
2. The manager shall produce the list of residents who will be catered in his/her mess, and the list of cooks and other staff engaged in the mess along with their full identification which will be subject to official scrutiny through appropriate agencies. The provost / warden may refuse or allow any person to work as the staff on any particular mess without assigning any reason. The manager shall on his personal responsibility certify that the cooks, and other staff engaged in the mess are of good character. They are neither criminals nor previous convicts and are

not assigned to him or acquired or engaged by him on account of any political associations. If at any time certificate given by the Manager is found contrary, shall be liable to disciplinary action as hostel resident as well as student of the college.

3. Student who may not join mess can only take their meals in the canteen. Any student found taking meals in the room shall be liable to disciplinary action.

G. HOSTEL CANTEEN:

No student resident shall be allowed to manage or operate any canteen or tea stall in the hostel. In case of need, more than one canteen may be established in the hostel premises, which shall be supervised by the Hostel Administration Committee.

H. VISITORS:

No visitor shall be allowed to meet the residents of hostel before 7:00a.m. and shall not remain in the hostel after 8:00p.m. He/she shall have to record his / her name, address, signature and the time of arrival and departure in the register kept at reception and deposit his/her NIC at reception.



20. IMPORTANT DIRECTIONS FOR CANDIDATES REGARDING SUBMISSION OF THE APPLICATION FORM.

1. Every application for admission shall be accompanied by the non-refundable entry test fee of Rs. 1500/- (Rupees One Thousand & five hundred Only) to be deposited in the name of Vice Chancellor Shaheed Benazir Bhutto Medical University in A/C No. 0259385831000344 of MCB Bank Limited of any branch in Sindh (write the name, Father's name and district on the back of receipt) along with one photocopy of the following documents duly attested by a Government officer only of B - 18 or above grade officer.

- a) Marks sheet of Matriculation & degree (pacca) Certificate from board.
- b) Mark sheet & Pass Certificate of Intermediate (Pre-Medical) / A level equivalent of the year as mentioned in "Eligibility of candidates" at 8.1 (in this prospectus) with minimum B grade, and with the science subjects of Biology, Chemistry, Physics / Mathematics.
- c) Equivalence Certificates from IBCC for A level examination.

Candidates producing equivalence certificate of examination other than intermediate Boards of Pakistan shall have to produce certificate from the competent authority of having passed the following subjects.

- i. Chemistry, Biology, Physics / Mathematic and English.
- ii. A pass certificate in Pakistan Studies, and Islamiat or Civics from any Intermediate Board of Pakistan for Muslims and non-Muslims, respectively.
- iii. All the A-level and O-level results submitted for the equivalence, calculation shall be determined by the Inter Board Committee of Chairmen, Islamabad (IBCC)

Chairmen) office No. 342, Street No 97, Sector G-9/4, Islamabad

- d) Transcript Certificate of A / O level.
- e) Permanent Resident Certificate (PRC) on form C of candidate.
- f) Domicile Certificate of Candidate on P-1.
- g) Domicile Certificate of Father/Mother/Guardian on P-1.

The Domicile Certificate of Mother shall only be accepted in case where father has expired and no such certificate was issued to him OR there has been remarriage / separation for which a valid document from Judge of the Court has to be produced.

NOTE:

- i. PRC and Domicile Certificate using from more than one district will make the candidate disqualified for admission.
- ii. PRC, Domicile of candidate and Father/Mother must belong to same district of the tagged districts of SMBBMU, otherwise the candidate may be disqualified.
- h) NIC / B-forms of candidate (from NADRA)

NIC of the candidate from NADRA can also be accepted either if he / she has attained the age of 18 years or both the parents are not alive (supported by death certificate).

- i) NIC of Father/Mother/ (from NADRA) with permanent address of district of domicile in Sindh.
- j) Death Certificate of Father, if not alive.
- k) Hafiz-e-Quran Certificate / Sanad from registered Madarsa (If applicable).

Address: Secretary IBCC (Inter Board Committee of

- l) Disability certificate for disabled candidates (if applicable) issued by department of Social & Welfare, government of Sindh.
- m) passport size photographs of the candidate with the names written on the back and attested as mentioned above.
- Rs. 370 will be received by TCS as their service charges and will give receipt of this amount to the candidate.
2. Entry Test will be conducted from the intermediate syllabus
 3. Affidavit / undertaking shall be given by the student and his / her parent or guardian at the time of taking admission, on stamp paper of Rs. 20 as per specimens given in appendix I & II, to the effect that they are not admitted in any university or medical college and they have not submitted any false document.
 4. The application form and required documents completed in all respects shall be submitted to the concerned branch of TCS express center within due date.
 5. In case if any candidate has not received his / her admit card two days before the entry test it becomes the responsibility of the candidate to contact the admission branch/office or his/her respective selection center instantly to collect the admit card, otherwise university will not be responsible for any consequence.

Note: While filling the application form ensure that you have written your valid address and active phone/mobile numbers in application form and admit card.





National Testing Service Pakistan

- ◆ Visit NTS website on www.nts.org.pk to check your name in eligible candidates list.
- ◆ Visit NTS website regularly to get latest information about the test.
- ◆ Sample test paper and test day instructions are also available on NTS website.

Tel: +92-21-34546928

SAMPLE TEST PAPERS

ENGLISH

Complete the sentence by choosing the most appropriate word, from the given lettered choices (A to E) below each.

1. Sensory cells _____ impulses by producing electrical signals.
 - A. responding
 - B. to respond
 - C. respond to
 - D. respond
 - E. responds
2. The first engine _____ heat to drive a machine was the steam engine.
 - A. made use of
 - B. to make use of
 - C. of using
 - D. of making use
 - E. used of

Choose the lettered word or phrase that is most nearly opposite in meaning to the word in capital letters.

3. **SIMULATED**:
 - A. real
 - B. contrived
 - C. unassuming
 - D. false
 - E. virtual
4. **MONOTHEIST**:
 - A. psychologist
 - B. analyst
 - C. polytheist
 - D. physicist
 - E. chemist

SAMPLE TEST PAPERS

Identify the word or phrase that needs to be changed for the sentence to be correct:

5. Yesterday one of the teacher was called by the principal. No error.
 A B C D E
6. Ali finds it difficult to put his idea into words. No error.
 A B C D E

Choose the word most similar in meaning to the capitalized ones.

7. DESPAIR:
 A. dejection
 B. confidence
 C. encouragement
 D. expectation
 E. hope
8. FEEBLE:
 A. faint
 B. strong
 C. vigorous
 D. sane
 E. effective

Read the passage to answer the questions 9-10

It is important that we should develop an attitude of objective and clear thinking in study of science. It will open and enlarge our minds which are the very soul of science. Experiments and research work have brought about great advancement in science. Therefore, we must realize that science is a creative activity.

9. Objective and clear thinking make the study of science.
 A. Easier
 B. Difficult
 C. Fruitful
 D. Enjoyable
 E. Boring
10. Experiments and research work are.
 A. Different
 B. Related
 C. Unrelated
 D. Opposite
 E. Parallel

CHEMISTRY

11. The rate of a chemical reaction is:
- determined from a balanced chemical equation
 - the change in concentration of products and reactions in a certain amount of time
 - not possible to determine experimentally
 - expressed in units of time
 - None of the above
12. In neutralization:
- the base is neutralized
 - the acid is neutralized
 - a salt is formed
 - water is formed
 - all of the above
13. An alkene with 16 carbons has a molecular formula of:
- -
 -
 -
 -
14. In 80 grams of NaOH, there are:
- 2 moles of NaOH
 - 1 moles of NaOH
 - 3 moles of NaOH
 - 0.5 moles of NaOH
 - 5 moles of NaOH
15. A-rays (Alpha) are:
- fast moving electrons
 - protons
 - neutron
 - positively charged helium nuclei
 - negatively charged helium nuclei
16. Iso-pentane and neo-pentane are the examples of:
- Functional group isomerism
 - Position isomerism
 - Chain isomerism
 - metamerism
 - None of the above

PHYSICS

17. As the temperature of a solid increases, its specific heat:
- A. increases
 - B. decreases
 - C. increases, then decreases
 - D. decreases, then increases
 - E. remains the same
18. Radiation is the chief method of energy transfer:
- A. from the Sun to an Earth satellite
 - B. from a gas flame to water in a teakettle
 - C. from a soldering iron to metals being soldered
 - D. from water to an ice cube floating in it
 - E. from a mammal to the surrounding air
19. If vibrating body is to be in resonance with another body, it must:
- A. be of the same material as the other body
 - B. vibrate with the greatest possible amplitude
 - C. have a natural frequency close to the natural frequency of the other body
 - D. vibrate faster than usual
 - E. vibrate more slowly than usual
20. Which pair includes a scalar quantity and a vector quantity?
- A. Kinetic energy and momentum
 - B. Potential energy and work
 - C. Velocity and acceleration
 - D. Weight and force
 - E. None of the above
21. A particle performs simple harmonic motion of amplitude 0.020 m and frequency 2.5 Hz. What is its maximum speed?:
- A. 0.008
 - B. 0.050
 - C. 0.125
 - D. 0.314
 - E. 0.157
22. A generator produces 100 kW of power at a potential difference of 10 kV. The power is transmitted through cables of total resistance 5. How much power is dissipated in the cables?
- A. 50 W
 - B. 250 W
 - C. 500 W
 - D. 1000 W
 - E. 50000 W

BIOLOGY

1. End of menstrual cycle in old age is called:
 - A. Andropause
 - B. Menopause
 - C. Gametopause
 - D. Sterility
 - E. Hemophilia

2. Genotype ratio of Mendel's Law of independent assortment is:
 - A. 3 : 1
 - B. 1 : 2 : 1
 - C. 9 : 3 : 3 : 1
 - D. 3 : 3
 - E. 3 : 2

3. Which of the following is a characteristic of land plants?
 - A. Multicellular
 - B. Heterogamy
 - C. Alternation of generations
 - D. Cell wall
 - E. All of the above

4. Molds and yeasts are classified as
 - A. Rhodophytes
 - B. Bryophytes
 - C. Fungi
 - D. Ciliates
 - E. Flagellates

5. Which compound captures light energy in plants?
 - A.
 - B.
 - C.
 - D. Chlorophyll
 - E. None of the above

6. Which is correctly associated?
 - A. RNA: thymine
 - B. DNA: uracil
 - C. RNA: replication
 - D. mRNA: picks up amino acids
 - E. RNA: ribose sugars

192

CAT-A

GAT-IV-08



Name: _____

NTS Signatory: _____

Father Name: _____

Candidate Signature: _____

Roll No. _____

Question Book No: _____

Color of your Question Book
(Fill only one side)

Yellow

Green

White

Blue

Pink



Photo
of
Candidate

Do not write or mark anything in this box

Fill the appropriate circle completely **LIKE THIS** ● Improper filled circles will be marked incorrect by the machine

- | | | | | |
|--|---|---|---|--|
| 1. <input checked="" type="radio"/> A <input type="radio"/> B <input type="radio"/> C <input type="radio"/> D <input type="radio"/> E | 21. <input type="radio"/> A <input type="radio"/> B <input type="radio"/> C <input type="radio"/> D <input type="radio"/> E | 41. <input type="radio"/> A <input type="radio"/> B <input type="radio"/> C <input type="radio"/> D <input type="radio"/> E | 61. <input type="radio"/> A <input type="radio"/> B <input type="radio"/> C <input type="radio"/> D <input type="radio"/> E | 81. <input type="radio"/> A <input type="radio"/> B <input type="radio"/> C <input type="radio"/> D <input type="radio"/> E |
| 2. <input type="radio"/> A <input checked="" type="radio"/> B <input type="radio"/> C <input type="radio"/> D <input type="radio"/> E | 22. <input type="radio"/> A <input type="radio"/> B <input type="radio"/> C <input type="radio"/> D <input type="radio"/> E | 42. <input type="radio"/> A <input type="radio"/> B <input type="radio"/> C <input type="radio"/> D <input type="radio"/> E | 62. <input type="radio"/> A <input type="radio"/> B <input type="radio"/> C <input type="radio"/> D <input type="radio"/> E | 82. <input type="radio"/> A <input type="radio"/> B <input type="radio"/> C <input type="radio"/> D <input type="radio"/> E |
| 3. <input checked="" type="radio"/> A <input type="radio"/> B <input type="radio"/> C <input type="radio"/> D <input type="radio"/> E | 23. <input type="radio"/> A <input type="radio"/> B <input type="radio"/> C <input type="radio"/> D <input type="radio"/> E | 43. <input type="radio"/> A <input type="radio"/> B <input type="radio"/> C <input type="radio"/> D <input type="radio"/> E | 63. <input type="radio"/> A <input type="radio"/> B <input type="radio"/> C <input type="radio"/> D <input type="radio"/> E | 83. <input type="radio"/> A <input type="radio"/> B <input type="radio"/> C <input type="radio"/> D <input type="radio"/> E |
| 4. <input checked="" type="radio"/> A <input type="radio"/> B <input type="radio"/> C <input type="radio"/> D <input type="radio"/> E | 24. <input type="radio"/> A <input type="radio"/> B <input type="radio"/> C <input type="radio"/> D <input type="radio"/> E | 44. <input type="radio"/> A <input type="radio"/> B <input type="radio"/> C <input type="radio"/> D <input type="radio"/> E | 64. <input type="radio"/> A <input type="radio"/> B <input type="radio"/> C <input type="radio"/> D <input type="radio"/> E | 84. <input type="radio"/> A <input type="radio"/> B <input type="radio"/> C <input type="radio"/> D <input type="radio"/> E |
| 5. <input type="radio"/> A <input checked="" type="radio"/> B <input type="radio"/> C <input type="radio"/> D <input type="radio"/> E | 25. <input type="radio"/> A <input type="radio"/> B <input type="radio"/> C <input type="radio"/> D <input type="radio"/> E | 45. <input type="radio"/> A <input type="radio"/> B <input type="radio"/> C <input type="radio"/> D <input type="radio"/> E | 65. <input type="radio"/> A <input type="radio"/> B <input type="radio"/> C <input type="radio"/> D <input type="radio"/> E | 85. <input type="radio"/> A <input type="radio"/> B <input type="radio"/> C <input type="radio"/> D <input type="radio"/> E |
| 6. <input type="radio"/> A <input type="radio"/> B <input checked="" type="radio"/> C <input type="radio"/> D <input type="radio"/> E | 26. <input type="radio"/> A <input type="radio"/> B <input type="radio"/> C <input type="radio"/> D <input type="radio"/> E | 46. <input type="radio"/> A <input type="radio"/> B <input type="radio"/> C <input type="radio"/> D <input type="radio"/> E | 66. <input type="radio"/> A <input type="radio"/> B <input type="radio"/> C <input type="radio"/> D <input type="radio"/> E | 86. <input type="radio"/> A <input type="radio"/> B <input type="radio"/> C <input type="radio"/> D <input type="radio"/> E |
| 7. <input type="radio"/> A <input type="radio"/> B <input type="radio"/> C <input checked="" type="radio"/> D <input type="radio"/> E | 27. <input type="radio"/> A <input type="radio"/> B <input type="radio"/> C <input type="radio"/> D <input type="radio"/> E | 47. <input type="radio"/> A <input type="radio"/> B <input type="radio"/> C <input type="radio"/> D <input type="radio"/> E | 67. <input type="radio"/> A <input type="radio"/> B <input type="radio"/> C <input type="radio"/> D <input type="radio"/> E | 87. <input type="radio"/> A <input type="radio"/> B <input type="radio"/> C <input type="radio"/> D <input type="radio"/> E |
| 8. <input type="radio"/> A <input type="radio"/> B <input type="radio"/> C <input type="radio"/> D <input type="radio"/> E | 28. <input type="radio"/> A <input type="radio"/> B <input type="radio"/> C <input type="radio"/> D <input type="radio"/> E | 48. <input type="radio"/> A <input type="radio"/> B <input type="radio"/> C <input type="radio"/> D <input type="radio"/> E | 68. <input type="radio"/> A <input type="radio"/> B <input type="radio"/> C <input type="radio"/> D <input type="radio"/> E | 88. <input type="radio"/> A <input type="radio"/> B <input type="radio"/> C <input type="radio"/> D <input type="radio"/> E |
| 9. <input type="radio"/> A <input type="radio"/> B <input checked="" type="radio"/> C <input type="radio"/> D <input type="radio"/> E | 29. <input type="radio"/> A <input type="radio"/> B <input type="radio"/> C <input type="radio"/> D <input type="radio"/> E | 49. <input type="radio"/> A <input type="radio"/> B <input type="radio"/> C <input type="radio"/> D <input type="radio"/> E | 69. <input type="radio"/> A <input type="radio"/> B <input type="radio"/> C <input type="radio"/> D <input type="radio"/> E | 89. <input type="radio"/> A <input type="radio"/> B <input type="radio"/> C <input type="radio"/> D <input type="radio"/> E |
| 10. <input type="radio"/> A <input type="radio"/> B <input checked="" type="radio"/> C <input type="radio"/> D <input type="radio"/> E | 30. <input type="radio"/> A <input type="radio"/> B <input type="radio"/> C <input type="radio"/> D <input type="radio"/> E | 50. <input type="radio"/> A <input type="radio"/> B <input type="radio"/> C <input type="radio"/> D <input type="radio"/> E | 70. <input type="radio"/> A <input type="radio"/> B <input type="radio"/> C <input type="radio"/> D <input type="radio"/> E | 90. <input type="radio"/> A <input type="radio"/> B <input type="radio"/> C <input type="radio"/> D <input type="radio"/> E |
| 11. <input type="radio"/> A <input type="radio"/> B <input type="radio"/> C <input type="radio"/> D <input type="radio"/> E | 31. <input type="radio"/> A <input type="radio"/> B <input type="radio"/> C <input type="radio"/> D <input type="radio"/> E | 51. <input type="radio"/> A <input type="radio"/> B <input type="radio"/> C <input type="radio"/> D <input type="radio"/> E | 71. <input type="radio"/> A <input type="radio"/> B <input type="radio"/> C <input type="radio"/> D <input type="radio"/> E | 91. <input type="radio"/> A <input type="radio"/> B <input type="radio"/> C <input type="radio"/> D <input type="radio"/> E |
| 12. <input type="radio"/> A <input type="radio"/> B <input type="radio"/> C <input type="radio"/> D <input type="radio"/> E | 32. <input type="radio"/> A <input type="radio"/> B <input type="radio"/> C <input type="radio"/> D <input type="radio"/> E | 52. <input type="radio"/> A <input type="radio"/> B <input type="radio"/> C <input type="radio"/> D <input type="radio"/> E | 72. <input type="radio"/> A <input type="radio"/> B <input type="radio"/> C <input type="radio"/> D <input type="radio"/> E | 92. <input type="radio"/> A <input type="radio"/> B <input type="radio"/> C <input type="radio"/> D <input type="radio"/> E |
| 13. <input type="radio"/> A <input type="radio"/> B <input type="radio"/> C <input type="radio"/> D <input type="radio"/> E | 33. <input type="radio"/> A <input type="radio"/> B <input type="radio"/> C <input type="radio"/> D <input type="radio"/> E | 53. <input type="radio"/> A <input type="radio"/> B <input type="radio"/> C <input type="radio"/> D <input type="radio"/> E | 73. <input type="radio"/> A <input type="radio"/> B <input type="radio"/> C <input type="radio"/> D <input type="radio"/> E | 93. <input type="radio"/> A <input type="radio"/> B <input type="radio"/> C <input type="radio"/> D <input type="radio"/> E |
| 14. <input type="radio"/> A <input type="radio"/> B <input type="radio"/> C <input type="radio"/> D <input type="radio"/> E | 34. <input type="radio"/> A <input type="radio"/> B <input type="radio"/> C <input type="radio"/> D <input type="radio"/> E | 54. <input type="radio"/> A <input type="radio"/> B <input type="radio"/> C <input type="radio"/> D <input type="radio"/> E | 74. <input type="radio"/> A <input type="radio"/> B <input type="radio"/> C <input type="radio"/> D <input type="radio"/> E | 94. <input type="radio"/> A <input type="radio"/> B <input type="radio"/> C <input type="radio"/> D <input type="radio"/> E |
| 15. <input type="radio"/> A <input type="radio"/> B <input type="radio"/> C <input type="radio"/> D <input type="radio"/> E | 35. <input type="radio"/> A <input type="radio"/> B <input type="radio"/> C <input type="radio"/> D <input type="radio"/> E | 55. <input type="radio"/> A <input type="radio"/> B <input type="radio"/> C <input type="radio"/> D <input type="radio"/> E | 75. <input type="radio"/> A <input type="radio"/> B <input type="radio"/> C <input type="radio"/> D <input type="radio"/> E | 95. <input type="radio"/> A <input type="radio"/> B <input type="radio"/> C <input type="radio"/> D <input type="radio"/> E |
| 16. <input type="radio"/> A <input type="radio"/> B <input type="radio"/> C <input type="radio"/> D <input type="radio"/> E | 36. <input type="radio"/> A <input type="radio"/> B <input type="radio"/> C <input type="radio"/> D <input type="radio"/> E | 56. <input type="radio"/> A <input type="radio"/> B <input type="radio"/> C <input type="radio"/> D <input type="radio"/> E | 76. <input type="radio"/> A <input type="radio"/> B <input type="radio"/> C <input type="radio"/> D <input type="radio"/> E | 96. <input type="radio"/> A <input type="radio"/> B <input type="radio"/> C <input type="radio"/> D <input type="radio"/> E |
| 17. <input type="radio"/> A <input type="radio"/> B <input type="radio"/> C <input type="radio"/> D <input type="radio"/> E | 37. <input type="radio"/> A <input type="radio"/> B <input type="radio"/> C <input type="radio"/> D <input type="radio"/> E | 57. <input type="radio"/> A <input type="radio"/> B <input type="radio"/> C <input type="radio"/> D <input type="radio"/> E | 77. <input type="radio"/> A <input type="radio"/> B <input type="radio"/> C <input type="radio"/> D <input type="radio"/> E | 97. <input type="radio"/> A <input type="radio"/> B <input type="radio"/> C <input type="radio"/> D <input type="radio"/> E |
| 18. <input type="radio"/> A <input type="radio"/> B <input type="radio"/> C <input type="radio"/> D <input type="radio"/> E | 38. <input type="radio"/> A <input type="radio"/> B <input type="radio"/> C <input type="radio"/> D <input type="radio"/> E | 58. <input type="radio"/> A <input type="radio"/> B <input type="radio"/> C <input type="radio"/> D <input type="radio"/> E | 78. <input type="radio"/> A <input type="radio"/> B <input type="radio"/> C <input type="radio"/> D <input type="radio"/> E | 98. <input type="radio"/> A <input type="radio"/> B <input type="radio"/> C <input type="radio"/> D <input type="radio"/> E |
| 19. <input type="radio"/> A <input type="radio"/> B <input type="radio"/> C <input type="radio"/> D <input type="radio"/> E | 39. <input type="radio"/> A <input type="radio"/> B <input type="radio"/> C <input type="radio"/> D <input type="radio"/> E | 59. <input type="radio"/> A <input type="radio"/> B <input type="radio"/> C <input type="radio"/> D <input type="radio"/> E | 79. <input type="radio"/> A <input type="radio"/> B <input type="radio"/> C <input type="radio"/> D <input type="radio"/> E | 99. <input type="radio"/> A <input type="radio"/> B <input type="radio"/> C <input type="radio"/> D <input type="radio"/> E |
| 20. <input type="radio"/> A <input type="radio"/> B <input type="radio"/> C <input type="radio"/> D <input type="radio"/> E | 40. <input type="radio"/> A <input type="radio"/> B <input type="radio"/> C <input type="radio"/> D <input type="radio"/> E | 60. <input type="radio"/> A <input type="radio"/> B <input type="radio"/> C <input type="radio"/> D <input type="radio"/> E | 80. <input type="radio"/> A <input type="radio"/> B <input type="radio"/> C <input type="radio"/> D <input type="radio"/> E | 100. <input type="radio"/> A <input type="radio"/> B <input type="radio"/> C <input type="radio"/> D <input type="radio"/> E |

HOW TO FILL THE ANSWER SHEET?

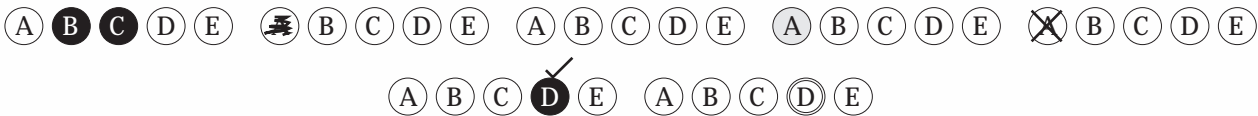
One page printed Answer Sheet is provided to answer the questions. USE ONLY BALL PEN (BLACK/ BLUE) TO SHADE/FILL THE CIRCLES.

How to fill an Answer: Answer sheet contains five circles containing five options of answer for one questions, containing alphabets from A to E inside, against each question number. The candidate has to completely shade/fill one circle that s/he thinks is correct. For example the candidate feels that the correct answer of the given question is 'A', then she/he may shade/fill the circle containing alphabet 'A' with ball pen like this:

“A” Filled



Incorrect Filling:



Personal Data on Answer Sheet

The Answer Sheet contains personal data of candidate on the top of the sheet. It has candidates' NAME, FATHER NAME and ROLL NO. The candidate is required to critically check these fields and sign in the required space. If any field of personal information is found in-correct the candidate MUST inform the invigilator present around.

Write down your Question booklet No. given on the right top corner of the Question booklet in the column of Question book No.

Fill the circle color of your question book. Fill the right circle otherwise you will confuse the marking process which can have negative effects.

Answer KEYS

Q#.	Right Choice
1	C
2	B
3	A
4	C
5	B
6	E
7	A
8	A
9	C
10	B
11	B
12	E
13	D
14	A
15	D
16	C
17	E
18	A
19	C
20	A
21	E
22	C
23	B
24	C
25	E
26	C
27	D
28	E

APPENDIX-I
(To be typed on Rs.20/- Stamp Paper)

AFFIDAVIT

I, Mr. Miss _____ S/o, D/o _____ resident of _____

District _____ hereby solemnly affirm as under:

- i. That, I am a holder of Permanent Residence Certificate (PRC) Form-C of district _____, Which was issued on the basis of domicile of district _____, issued to my Father/ Mother.
- ii. That, I do not hold PRC Form-C and Domicile of any other District in Pakistan.
- iii. That, I am an applicant for admission in _____ Medical Institution of SMBBMU for the merit seat of district on the basis of above PRC / Domicile .
- iv. That, all documents submitted for admission with this application form are genuine and correct and no any false document is enclosed.
- v. That, if any document / information is found to be false or incorrect at any stage, shall make my admission Liable to cancellation..
- vi. That, I am not admitted in any other public Medical or Dental College / Public Medical University of the Country for MBBS/BDS Course.
- vii. That, I have not applied for admission in any public sector medical institution against any seat of other district.
- viii. That, If I am granted admission in MedicalCollege, I will immediately surrender my previous admission in any course, other than MBBS / BDS, in any private Medical or general institution of the Country. Failure to do so or such concealment shall make my admission liable to cancellation.

That whatever stated above is true and correct to the best of my knowledge and belief.

Signature of the student

Date _____

Full Name: _____

Place _____

Address: _____

Attested by the 1st Class Magistrate

APPENDIX-II
(To be typed on Rs.20/- Stamp Paper)

UNDERTAKING BY THE STUDENT& PARENT/GUARDIAN
UNDERTAKING BY THE STUDENT

I _____ S/o, D/o _____ do hereby solemnly declare that I am not a member of any political group or party.

I undertake not to involve myself in any kind of political activity throughout my tenure in the institution as a student. If my above statement is found to be incorrect in any way or I violate this undertaking at any time I may be expelled/rusticated from the institution.

Date _____

Place _____

Signature of the student

Full Name: _____

Address: _____

UNDERTAKING BY THE PARENT/GUARDIAN

I _____ parent / Guardian of Mr./Miss _____ declare that he / she will not join any political group or party or involve himself/her self in any political activity directly or indirectly throughout his/her career as medical student. I also undertake that if my son/daughter/ward is found involved in any political / ethnic activity, I shall have no objection to his / her expulsion or rustication from the institution. Further I agree that whatever or fine is imposed on my ward. I will be responsible to pay that amount to university otherwise my ward shall not be allowed to take any examination.

Date _____

Place _____

Signature of parent/guardian

Full Name: _____

Address: _____

Attested by the 1st Class Magistrate.

CHECK LIST

S.NO	DOCUMENT	Yes	No
		P	E
1.	Original Receipt of MCB bank (along with photocopy) prescribed of Rs 1500/- in the name of Vice Chancellor SMBBMU, Larkana, write name, father's name and district candidate at the back of receipt.		
2.	Original Application Form, completely filled.		
3.	Original Admit Card of NTS in triplicate duly completed with recent photograph pasted in all three boxes.		
4.	One Photocopy of Matriculation Certificate (SSC) or O-Level equivalence certificate by IBCC		
5.	One Photocopy of Matric Marks Certificate or O-Level equivalence Certificate by IBCC.		
6.	One Photocopy of Intermediate Science Marks Certificate (HSC) or A-Level equivalent Certificate by IBCC (Pre-Medical) in year as specified in para 8.1 of the prospectus		
7.	One Photocopy of Candidate's Domicile Certificate on (Form P-I) of the tagged district		
8.	One Photocopy of Candidate's Permanent Residence Certificate (PRC Form "C") of the tagged districts.		
9.	One Photocopy of Domicile Certificate on (Form P-1) Father / Guardian of the tagged districts		
10.	One Photocopy of Candidate's CNIC or Form "B" issued by NADRA (If candidate is below the age of 18 years)		
11.	One Photocopy of CNIC Father/ Guardian, issued by NADRA		
12.	One Photocopy of Hafiz-e-Quraan Certificate (If applicable)		
13.	One Photocopy, Death Certificate of the Father if Father is not alive		
14.	One Photocopy of Certificate of Disability (In case of Disabled Candidate) from Social & Welfare Department Government of Sindh		
15.	06 recent Passport size Photographs of Candidate with the Name of candidate and district duly written on the Back of these Photographs		
16.	Candidates applying under the category of UEAP Overseas Pakistanis should submit the proof of his/her Father/Mother Working outside Pakistan (from the Embassy or Consulate of Pakistan in that Country)		

OPTIONS FOR ADMISSION IN THE MEDICAL INSTITUTIONS

Course applied for (Write either MBBS or BDS in the column of choice)

1st Choice		2nd Choice	
------------	--	------------	--

I hereby give my priority wise option for admission in the following Medical Colleges / Institutions in Sindh and Punjab on Merit cum Choice seats from the Colleges **CMC Larkana, GMMMC Sukkur, DUHS Karachi, SMU Karachi, AJ&K, & FJMC Lahore (For Girls).**

1. _____	2. _____
3. _____	4. _____
5. _____	6. _____
7. _____	8. _____
_____	_____

NOTE:-This option once exercised shall be final. The University and constituent colleges shall however consider this option only according to merit and the choice as per rules laid down in the admission policy. Overwriting is not acceptable.

HAFIZ-E-QURAN CERTIFICATE:

Sanad/Certificate No: _____ Date of Issue : _____

Name of Institution / Madrasah: _____

Signature of Applicant

FOR DISABLED CANDIDATES

Nature of Disability: _____

Disability Certificate No: _____ Date of Issue : _____

Name of issuing authority: _____

Signature of Applicant

Note: All the candidates are that application forms should be filled with due care, because options once written will be considered as final and can not be changed

CERTIFICATE FROM PRINCIPAL OF THE COLLEGE / SCHOOL, LAST ATTENDED

By the Principal of _____ College / School _____

This is to certify that Mr. /Miss. _____ S/o/D/o _____

Was a student of this college having been admitted into _____ Class from _____ to _____

The following are the particulars of the student in accordance with the official record maintained in the office of this college

Name with Father's Name:

Permanent Home Address (Village , Taluka& District):

Intermediate (Pre-Medical) Examination of Board / University:

Date of Passing:

Seat No:

Enrolment No:

Subjects	Part-I (100)	Part-II(100)	Total
-----------------	---------------------	---------------------	--------------

Physics			
---------	--	--	--

Chemistry			
-----------	--	--	--

Biology			
---------	--	--	--

English			
---------	--	--	--

Grade / Division			
------------------	--	--	--

No. of attempts at which passed			
---------------------------------	--	--	--

Whether received any punishment during the time he / she was student of the college, if so, give details.

Particulars

It is further certified that during his/her period of stay in this college, his/her work, conduct and character were _____

Place:

Date:

Signature of the Principal with seal

PARTICULARS OF FATHER /GUARDIAN		
Name:		
Occupation :	Designation :	
Department / Organization :		
Office/ BusinessAddress :		
Office/ BusinessPhone :	Mobile No:	
Annual Income :	Religion :	Nationality :
District of Domicile :	Date of Issue :	Certificate No :
Signature of Father/Guardian		

ACADEMIC QUALIFICATION OF THE CANDIDATE							
Name of Examination	Matric Science / O Level			Inter Science / A Level			
Seat No.							
Passing Year							
Name of Board							
Total Marks Obtained							
Division / Grade							
Annual / Suppl:							
Marks / Grade Obtained in Science	Physics		Chemistry		Biology		Total out of 600
Subject in Intermediate / A Level Examination	P-I (100)	P-II (100)	P-I (100)	P-II (100)	P-I (100)	P-II (100)	
Signature of Applicant							
			Dated				

FOR OFFICE USE ONLY

Three Science Subjects Marks	HSSC-Year	Deduction	Hafiz-e-Quran	Adjusted

IMPORTANT NOTE FOR CANDIDATE

Incomplete application forms including those with short documents shall not be entertained and rejected.

INSTRUCTIONS.

1. Please bring this card on the date of the Entry Test.
2. No candidate shall be allowed to enter the venue without this admit card.
3. No any other document/card in lieu of this Admit Card shall be accepted.

NOTE:

- a. You are required to be present one hour before the start of test.
- b. Late comers will not be allowed to sit in the test.
- c. Candidates are strictly prohibited to bring pencil, eraser, any books, notes, calculator, mobile phones, purses etc.

NOTE:

Candidates are directed in their own interest to fill the Address boxes with the address where courier service can deliver them any correspondence. Incomplete, vague or address pertaining to the area where courier service does not persist may cause difficulty in delivery of correspondence.

FILL BOXES WITH YOUR PRESENT ADDRESS

Name :

Father's Name :

Address :

Tel:

Mobile No:

Postal Code No :

FILL BOXES WITH YOUR PRESENT ADDRESS

Name :

Father's Name :

Address :

Tel:

Mobile No:

Postal Code No :

FILL BOXES WITH YOUR PRESENT ADDRESS

Name :

Father's Name :

Address :

Tel:

Mobile No:

Postal Code No :

FILL BOXES WITH YOUR PRESENT ADDRESS

Name :

Father's Name :

Address :

Tel:

Mobile No:

Postal Code No :

FILL BOXES WITH YOUR PRESENT ADDRESS

Name :

Father's Name :

Address :

Tel:

Mobile No:

Postal Code No :

FILL BOXES WITH YOUR PRESENT ADDRESS

Name :

Father's Name :

Address :

Tel:

Mobile No:

Postal Code No :

FILL BOXES WITH YOUR PRESENT ADDRESS

Name :

Father's Name :

Address :

Tel:

Mobile No:

Postal Code No :

FILL BOXES WITH YOUR PRESENT ADDRESS

Name :

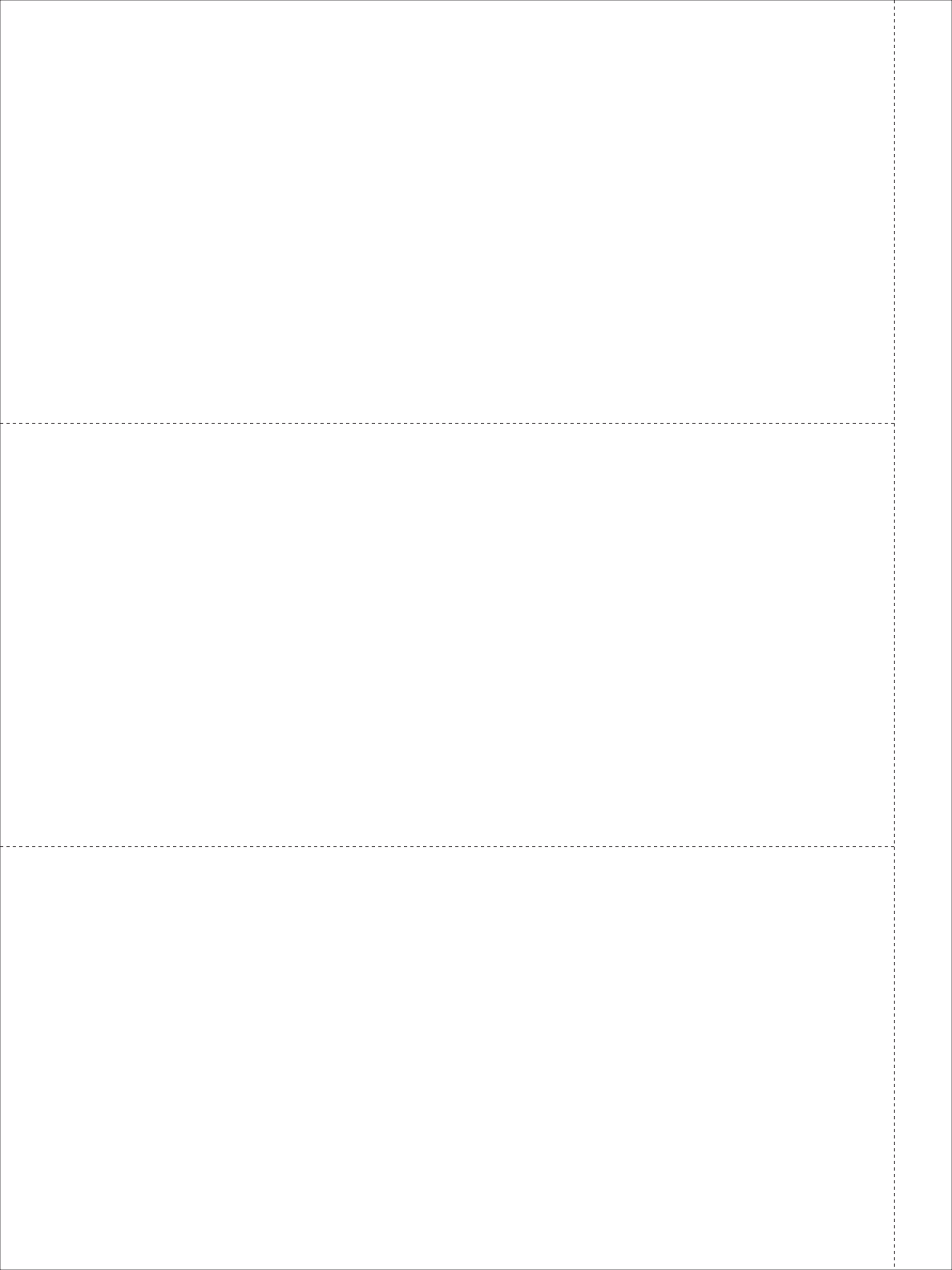
Father's Name :

Address :

Tel:

Mobile No:

Postal Code No :



APPLICATION FORM FOR ADMISSION IN MBBS/BDS AGAINST
UNIVERSITY EDUCATION ASSISTANCE PROGRAMME
LOCAL CATEGORY

ACADEMIC SESSION 2015-16

NAME: _____ MALE / FEMALE

FATHER'S NAME: _____

Guardian's name, address & relationship with candidate: _____

PERMANENT ADDRESS: _____

PRESENT POSTAL ADDRESS WITH PHONE NO: _____ ---- _____

REQUIRED ADMISSION FOR WHICH COURSE _____
(Write MBBS or BDS as the case may be)

DD/PAY ORDER NO/BANK _____ DATED _____ FOR RS. 4,87,410/-
(Rupees Four Lac Eighty Seven Thousand Four Hundred Ten only).

DATE OF BIRTH _____ DISTRICT OF DOMICILE _____

INTERMEDIATE SCIENCE (PRE-MEDICAL) PASSED IN YEAR _____

(or Equivalent Examination) WITH DIVISION / GRADE _____

AGGREGATE SCORE AFTER ENTRY TEST _____
(Matric + HSSC + ENTRY TEST)

MERIT NO. IN THE DISTRICT ACCORDING TO FINAL MERIT LIST _____

DATE _____ SIGNATURE OF APPLICANT _____

**Note: Application for the category of UEAP (Local) and UEAP (Overseas) for admission
in MBBS/BDS will be received after the display of Final Merit List (District Wise)**

Following documents attached with the form at the time of submission.

1. * DD / Pay Order of prescribed fee as mentioned above in the name of Vice Chancellor SMBBMU, Larkana, for MBBS or BDS.
2. Entry Test Admit Card.

APPLICATION FORM FOR ADMISSION IN MBBS/BDS AGAINST
UNIVERSITY EDUCATION ASSISTANCE PROGRAMME
OVERSEAS PAKISTANIS / FOREIGN NATIONALS CATEGORY

ACADEMIC SESSION 2015-16

NAME: _____ MALE / FEMALE

FATHER'S NAME: _____

Guardian's name, address & relationship with candidate: _____

PERMANENT ADDRESS: _____

PRESENT POSTAL ADDRESS WITH PHONE NO: _____

REQUIRED ADMISSION FOR WHICH COURSE _____
(Write MBBS or BDS as the case may be)

DD/PAY ORDER NO/BANK _____ DATED _____ FOR US \$. 9,933/-
(US Dollars Nine Tousand Nine Hunderd Thirty Three Only).

DATE OF BIRTH _____ DISTRICT OF DOMICILE _____

INTERMEDIATE SCIENCE (PRE-MEDICAL) PASSED IN YEAR _____

(or Equivalent Examination) WITH DIVISION / GRADE _____

AGGREGATE SCORE AFTER ENTRY TEST _____
(Matric + HSSC + ENTRY TEST)

MERIT NO. IN THE DISTRICT ACCORDING TO FINAL MERIT LIST _____

DATE _____ SIGNATURE OF APPLICANT _____

**Note: Application for the category of UEAP (Local) and UEAP (Overseas) for admission
in MBBS/BDS will be received after the display of Final Merit List (District Wise)**

Following documents attached with the form at the time of submission.

1. * DD / Pay Order of prescribed fee as mentioned above in the name of Vice Chancellor SMBBMU, Larkana, for MBBS or BDS.
2. Entry Test Admit Card.